

## MTCH1 rabbit pAb

<b>Catalog No :</b>	YT7114
<b>Reactivity :</b>	Human;Mouse
<b>Applications :</b>	WB;ELISA;IHC
<b>Target :</b>	MTCH1
<b>Gene Name :</b>	MTCH1 PSAP CGI-64 UNQ1871/PRO4314
<b>Protein Name :</b>	MTCH1
<b>Human Gene Id :</b>	23787
<b>Human Swiss Prot No :</b>	Q9NZJ7
<b>Mouse Gene Id :</b>	56462
<b>Mouse Swiss Prot No :</b>	Q791T5
<b>Immunogen :</b>	Synthesized peptide derived from human MTCH1 AA range: 235-285
<b>Specificity :</b>	This antibody detects endogenous levels of MTCH1 at Human/Mouse
<b>Formulation :</b>	Liquid in PBS containing 50% glycerol, 0.5% BSA and 0.02% sodium azide.
<b>Source :</b>	Polyclonal, Rabbit,IgG
<b>Dilution :</b>	WB 1:500-2000;IHC 1:50-300; ELISA 2000-20000
<b>Purification :</b>	The antibody was affinity-purified from rabbit antiserum by affinity-chromatography using epitope-specific immunogen.
<b>Concentration :</b>	1 mg/ml
<b>Storage Stability :</b>	-15°C to -25°C/1 year(Do not lower than -25°C)

**Molecularweight :** 43kD

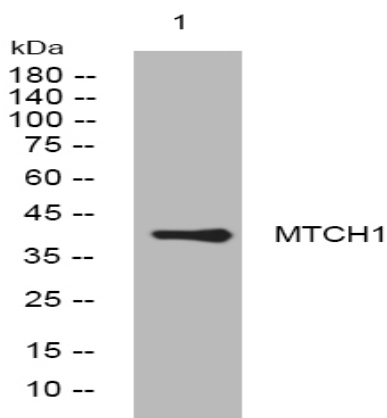
**Background :** This gene encodes a member of the mitochondrial carrier family. The encoded protein is localized to the mitochondrion inner membrane and induces apoptosis independent of the proapoptotic proteins Bax and Bak. Pseudogenes on chromosomes 6 and 11 have been identified for this gene. Alternatively spliced transcript variants encoding multiple isoforms have been observed. [provided by RefSeq, Oct 2012],

**Function :** function:Potential mitochondrial transporter. May play a role in apoptosis.,similarity:Belongs to the mitochondrial carrier family.,similarity:Contains 2 Solcar repeats.,subunit:Interacts with PSEN1.,tissue specificity:Widely expressed with a predominant expression in brain.,

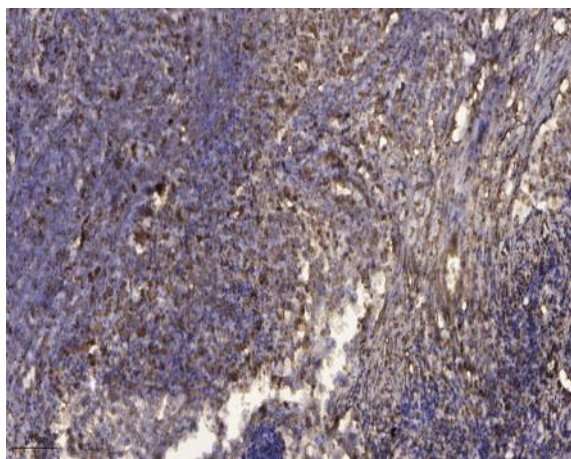
**Subcellular Location :** Mitochondrion outer membrane ; Multi-pass membrane protein .

**Expression :** Widely expressed with a predominant expression in brain.

## Products Images



Western blot analysis of lysates from A431 cells, primary antibody was diluted at 1:1000, 4° over night



Immunohistochemical analysis of paraffin-embedded human Squamous cell carcinoma of lung. 1, Antibody was diluted at 1:200(4° overnight). 2, Tris-EDTA,pH9.0 was used for antigen retrieval. 3,Secondary antibody was diluted at 1:200(room temperature, 45min).