

KBP rabbit pAb

Catalog No :	YT7104
Reactivity :	Human;Mouse;Rat
Applications :	WB;IHC
Target :	KBP
Gene Name :	KIAA1279 KBP
Protein Name :	KBP
Human Gene Id :	26128
Human Swiss Prot No :	Q96EK5
Mouse Gene Id :	72320
Mouse Swiss Prot No :	Q6ZPU9
Rat Gene Id :	606294
Rat Swiss Prot No :	Q4G074
Immunogen :	Synthesized peptide derived from human KBP AA range: 542-592
Specificity :	This antibody detects endogenous levels of KBP at Human/Mouse/Rat
Formulation :	Liquid in PBS containing 50% glycerol, 0.5% BSA and 0.02% sodium azide.
Source :	Polyclonal, Rabbit,IgG
Dilution :	WB 1:500-2000;IHC 1:50-300
Purification :	The antibody was affinity-purified from rabbit antiserum by affinity-chromatography using epitope-specific immunogen.

Concentration : 1 mg/ml

Storage Stability : -15°C to -25°C/1 year(Do not lower than -25°C)

Molecularweight : 68kD

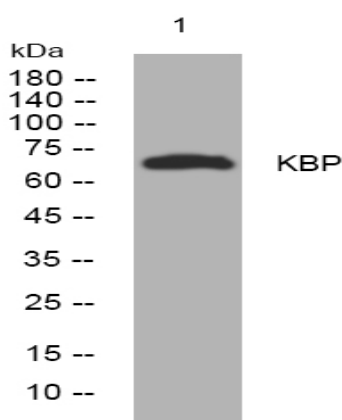
Background : This gene encodes a kinesin family member 1 binding protein that is characterized by two tetratricopeptide repeats. The encoded protein localizes to the mitochondria and may be involved in regulating transport of the mitochondria. Mutations in this gene are associated with Goldberg-Shprintzen megacolon syndrome. [provided by RefSeq, Mar 2010],

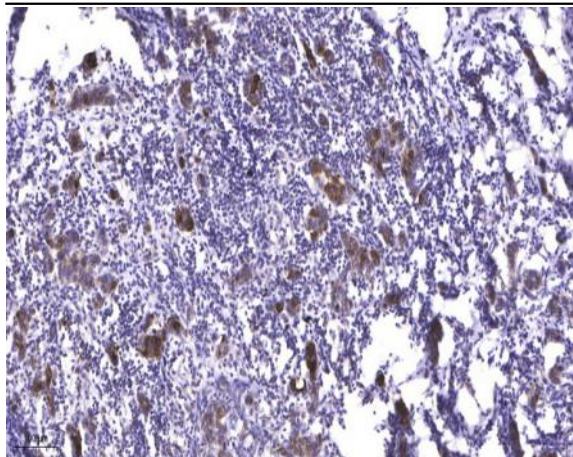
Function : disease:Defects in KIAA1279 are the cause of Goldberg-Shprintzen megacolon syndrome (GOSHS) [MIM:609460]. GOSHS is characterized by microcephaly, mental retardation and facial dysmorphism, as well as phenotypes related to Hirschsprung disease syndrome.,function:Required for organization of axonal microtubules, and axonal outgrowth and maintenance during peripheral and central nervous system development. Regulates mitochondrial transport by modulating KIF1B motor activity.,similarity:Belongs to the KIF1-binding protein family.,subunit:Interacts with KIF1B.,tissue specificity:Highly expressed in heart, brain, ovary, testis, spinal cord and all specific brain regions examined. Moderate expressed at intermediate level in all other adult tissues examined, as well as in fetal liver and brain. Not expressed in blood leukocytes.,

Subcellular Location : Cytoplasm, cytoskeleton .

Expression : Highly expressed in heart, brain, ovary, testis, spinal cord and all specific brain regions examined. Moderate expressed at intermediate level in all other adult tissues examined, as well as in fetal liver and brain. Not expressed in blood leukocytes.

Products Images





Immunohistochemical analysis of paraffin-embedded human Breast cancer. 1, Antibody was diluted at 1:200(4° overnight). 2, Tris-EDTA,pH9.0 was used for antigen retrieval. 3,Secondary antibody was diluted at 1:200(room temperature, 45min).