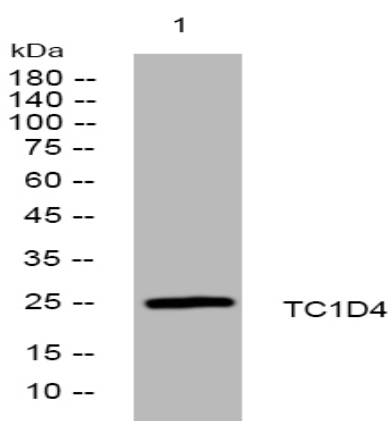


TC1D4 rabbit pAb

Catalog No :	YT7092
Reactivity :	Human;Mouse
Applications :	WB
Target :	TC1D4
Gene Name :	TCTEX1D4
Protein Name :	TC1D4
Human Gene Id :	343521
Human Swiss Prot No :	Q5JR98
Mouse Gene Id :	242646
Mouse Swiss Prot No :	Q8CDY7
Immunogen :	Synthesized peptide derived from human TC1D4 AA range: 43-93
Specificity :	This antibody detects endogenous levels of TC1D4 at Human/Mouse
Formulation :	Liquid in PBS containing 50% glycerol, 0.5% BSA and 0.02% sodium azide.
Source :	Polyclonal, Rabbit,IgG
Dilution :	WB 1:500-2000
Purification :	The antibody was affinity-purified from rabbit antiserum by affinity-chromatography using epitope-specific immunogen.
Concentration :	1 mg/ml
Storage Stability :	-15°C to -25°C/1 year(Do not lower than -25°C)

Molecularweight : 24kD**Function :** similarity:Belongs to the dynein light chain Tctex-type family.,subunit:Interacts with ENG/endoglin, TGFBR2 and TGFBR3.,tissue specificity:Ubiquitously expressed.,**Subcellular Location :** Cell projection, cilium, flagellum . Cytoplasmic vesicle, secretory vesicle, acrosome . Cytoplasm, cytoskeleton, cilium axoneme . Cytoplasm . Nucleus . Cytoplasm, cytoskeleton, microtubule organizing center . Present along the entire length of the flagellum, including principal and endpiece, and more predominantly in the midpiece region. .**Expression :** Ubiquitously expressed (PubMed:16982625). Expressed in testis (at protein level) (PubMed:23789093).

Products Images



Western blot analysis of lysates from MCF-7 cells, primary antibody was diluted at 1:1000, 4° over night