

RIP rabbit pAb

Catalog No :	YT7091
Reactivity :	Human;Mouse;Rat
Applications :	WB;ELISA;IHC
Target :	RIP
Gene Name :	RPAIN RIP
Protein Name :	RIP
Human Gene Id :	84268
Human Swiss Prot No :	Q86UA6
Mouse Gene Id :	69723
Mouse Swiss Prot No :	Q9CWFY9
Rat Gene Id :	287463
Rat Swiss Prot No :	Q4G2Y1
Immunogen :	Synthesized peptide derived from human RIP AA range: 117-167
Specificity :	This antibody detects endogenous levels of RIP at Human/Mouse/Rat
Formulation :	Liquid in PBS containing 50% glycerol, 0.5% BSA and 0.02% sodium azide.
Source :	Polyclonal, Rabbit,IgG
Dilution :	WB 1:500-2000;IHC 1:50-300; ELISA 2000-20000
Purification :	The antibody was affinity-purified from rabbit antiserum by affinity-chromatography using epitope-specific immunogen.

Concentration : 1 mg/ml

Storage Stability : -15°C to -25°C/1 year(Do not lower than -25°C)

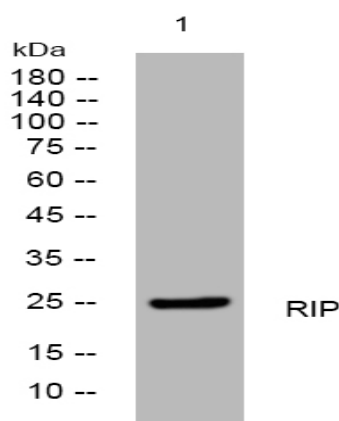
Molecularweight : 24kD

Function : function:Mediates the import of RPA complex into the nucleus, possibly via some interaction with importin beta. Isoform 2 is sumoylated and mediates the localization of RPA complex into the PML body of the nucleus, thereby participating in RPA function in DNA metabolism.,PTM:Isoform 2 is sumoylated. Sumoylation is required for localization in the nuclear PML body and transport of RPA complex in PML body. Upon UV irradiation and during S phase, it is desumoylated, releasing RPA complex that is translocated to sites of DNA damage. Sumoylation takes place at different Lys residues.,similarity:Contains 1 RIP-type zinc finger.,subcellular location:Only nuclear, localizes to PML body.,subunit:Interacts with the RPA1 subunit of RPA complex.,tissue specificity:Widely expressed. Expressed in pancreas, kidney, muscle, liver, lung, placenta, brain, heart, leukocytes, colon, intestine, ovary, testis

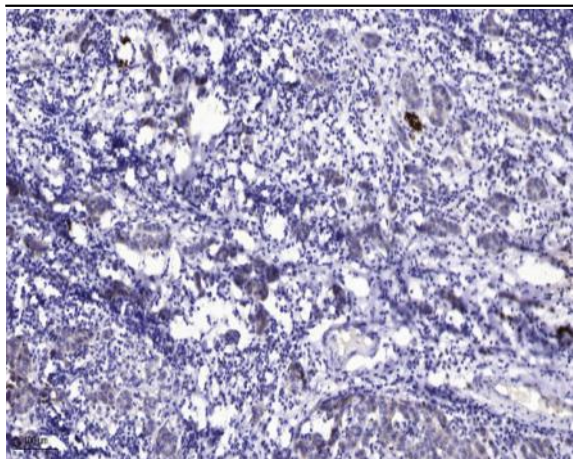
Subcellular Location : [Isoform 1]: Cytoplasm. Nucleus.; [Isoform 2]: Nucleus, PML body.

Expression : Widely expressed. Expressed in pancreas, kidney, muscle, liver, lung, placenta, brain, heart, leukocytes, colon, intestine, ovary, testis, prostate, thymus and spleen.

Products Images



Western blot analysis of lysates from HeLa cells, primary antibody was diluted at 1:1000, 4° over night



Immunohistochemical analysis of paraffin-embedded human Breast cancer. 1, Antibody was diluted at 1:200(4° overnight). 2, Tris-EDTA,pH9.0 was used for antigen retrieval. 3,Secondary antibody was diluted at 1:200(room temperature, 45min).