

SG196 rabbit pAb

| | |
|------------------------------|---|
| Catalog No : | YT7079 |
| Reactivity : | Human;Mouse;Rat |
| Applications : | WB;IHC |
| Target : | SG196 |
| Fields : | >>Mannose type O-glycan biosynthesis;>>Metabolic pathways |
| Gene Name : | SGK196 |
| Protein Name : | SG196 |
| Human Gene Id : | 84197 |
| Human Swiss Prot No : | Q9H5K3 |
| Mouse Gene Id : | 74653 |
| Mouse Swiss Prot No : | Q3TUA9 |
| Rat Gene Id : | 306549 |
| Rat Swiss Prot No : | Q4V8A9 |
| Immunogen : | Synthesized peptide derived from human SG196 AA range: 178-228 |
| Specificity : | This antibody detects endogenous levels of SG196 at Human/Mouse/Rat |
| Formulation : | Liquid in PBS containing 50% glycerol, 0.5% BSA and 0.02% sodium azide. |
| Source : | Polyclonal, Rabbit,IgG |
| Dilution : | WB 1:500-2000;IHC 1:50-300 |
| Purification : | The antibody was affinity-purified from rabbit antiserum by affinity- |

chromatography using epitope-specific immunogen.

Concentration : 1 mg/ml

Storage Stability : -15°C to -25°C/1 year (Do not lower than -25°C)

Molecularweight : 39kD

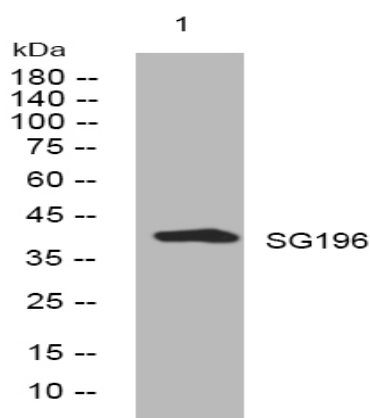
Background : This gene encodes a protein that may be involved in the presentation of the laminin-binding O-linked carbohydrate chain of alpha-dystroglycan (a-DG), which forms transmembrane linkages between the extracellular matrix and the exoskeleton. Some pathogens use this O-linked carbohydrate unit for host entry. Loss of function compound heterozygous mutations in this gene were found in a human patient affected by the Walker-Warburg syndrome (WWS) phenotype. Mice lacking this gene contain misplaced neurons (heterotopia) in some regions of the brain, possibly from defects in neuronal migration. Alternative splicing of this gene results in multiple transcript variants. [provided by RefSeq, May 2013],

Function : domain: The protein kinase domain is predicted to be catalytically inactive., similarity: Belongs to the protein kinase superfamily. Ser/Thr protein kinase family. STKL subfamily., similarity: Contains 1 protein kinase domain.,

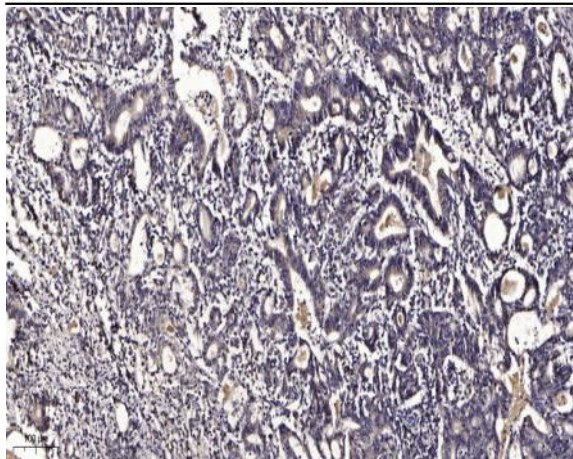
Subcellular Location : Endoplasmic reticulum membrane ; Single-pass type II membrane protein .

Expression : Highest expression is observed in brain, skeletal muscle, kidney and heart in fetal and adult tissues.

Products Images



Western blot analysis of lysates from K562 cells, primary antibody was diluted at 1:1000, 4° over night



Immunohistochemical analysis of paraffin-embedded human Gastric adenocarcinoma. 1, Antibody was diluted at 1:200(4 ° overnight). 2, Tris-EDTA,pH9.0 was used for antigen retrieval. 3,Secondary antibody was diluted at 1:200(room temperature, 45min).