

## KR121 rabbit pAb

<b>Catalog No :</b>	YT7068
<b>Reactivity :</b>	Human;Mouse
<b>Applications :</b>	IHC;IF
<b>Target :</b>	KR121
<b>Gene Name :</b>	KRTAP12-1 KAP12.1 KRTAP12.1
<b>Protein Name :</b>	KR121
<b>Human Gene Id :</b>	353332
<b>Human Swiss Prot No :</b>	P59990
<b>Mouse Gene Id :</b>	16694
<b>Mouse Swiss Prot No :</b>	Q9Z287
<b>Immunogen :</b>	Synthesized peptide derived from human KR121 AA range: 22-72
<b>Specificity :</b>	This antibody detects endogenous levels of KR121 at Human/Mouse
<b>Formulation :</b>	Liquid in PBS containing 50% glycerol, 0.5% BSA and 0.02% sodium azide.
<b>Source :</b>	Polyclonal, Rabbit,IgG
<b>Dilution :</b>	IHC 1:50-200. IF 1:50-200
<b>Purification :</b>	The antibody was affinity-purified from rabbit antiserum by affinity-chromatography using epitope-specific immunogen.
<b>Concentration :</b>	1 mg/ml
<b>Storage Stability :</b>	-15°C to -25°C/1 year(Do not lower than -25°C)

**Molecularweight :** 11kD

**Function :**

function:In the hair cortex, hair keratin intermediate filaments are embedded in an interfilamentous matrix, consisting of hair keratin-associated proteins (KRTAP), which are essential for the formation of a rigid and resistant hair shaft through their extensive disulfide bond cross-linking with abundant cysteine residues of hair keratins. The matrix proteins include the high-sulfur and high-glycine-tyrosine keratins.,similarity:Belongs to the KRTAP type 12 family.,subunit:Interacts with hair keratins.,tissue specificity:Restricted to a narrow region of the hair fiber cuticle, lying approximately 20 cell layers above the apex of the dermal papilla of the hair root; not detected in any other tissues.,

**Subcellular**

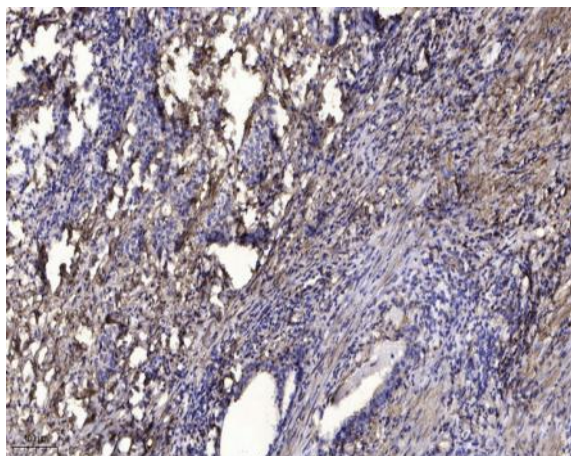
**Location :**

keratin filament,

**Expression :**

Restricted to a narrow region of the hair fiber cuticle, lying approximately 20 cell layers above the apex of the dermal papilla of the hair root; not detected in any other tissues.

## Products Images



Immunohistochemical analysis of paraffin-embedded human Gastric adenocarcinoma. 1, Antibody was diluted at 1:200(4° overnight). 2, Tris-EDTA,pH9.0 was used for antigen retrieval. 3,Secondary antibody was diluted at 1:200(room temperature, 45min).