

LRC48 rabbit pAb

| | |
|------------------------------|---|
| Catalog No : | YT7067 |
| Reactivity : | Human;Mouse;Rat |
| Applications : | WB;IHC |
| Target : | LRC48 |
| Gene Name : | LRRC48 |
| Protein Name : | LRC48 |
| Human Gene Id : | 83450 |
| Human Swiss Prot No : | Q9H069 |
| Mouse Gene Id : | 74665 |
| Mouse Swiss Prot No : | Q9D5E4 |
| Rat Gene Id : | 287371 |
| Rat Swiss Prot No : | Q5XI54 |
| Immunogen : | Synthesized peptide derived from human LRC48 AA range: 250-300 |
| Specificity : | This antibody detects endogenous levels of LRC48 at Human/Mouse/Rat |
| Formulation : | Liquid in PBS containing 50% glycerol, 0.5% BSA and 0.02% sodium azide. |
| Source : | Polyclonal, Rabbit,IgG |
| Dilution : | WB 1:500-2000;IHC 1:50-300 |
| Purification : | The antibody was affinity-purified from rabbit antiserum by affinity-chromatography using epitope-specific immunogen. |

Concentration : 1 mg/ml

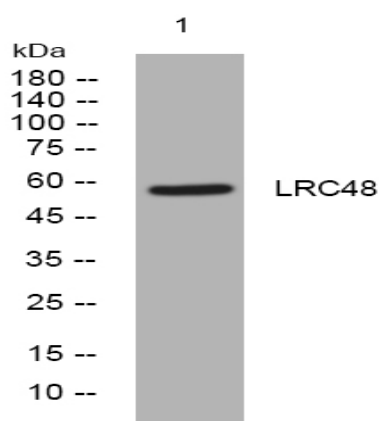
Storage Stability : -15°C to -25°C/1 year(Do not lower than -25°C)

Molecularweight : 58kD

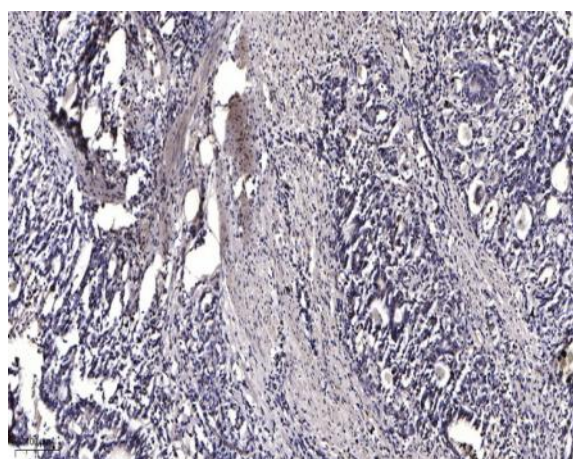
Function : similarity:Contains 5 LRR (leucine-rich) repeats.,

Subcellular Location : Cytoplasm, cytoskeleton, cilium axoneme . Cell projection, cilium . Cytoplasm, cytoskeleton, flagellum axoneme . Cell projection, cilium, flagellum .

Products Images



Western blot analysis of lysates from Hela cells, primary antibody was diluted at 1:1000, 4° over night



Immunohistochemical analysis of paraffin-embedded human Gastric adenocarcinoma. 1, Antibody was diluted at 1:200(4° overnight). 2, Tris-EDTA,pH9.0 was used for antigen retrieval. 3,Secondary antibody was diluted at 1:200(room temperature, 45min).