

cGAS rabbit pAb

Catalog No :	YT7062
Reactivity :	Human;Mouse
Applications :	WB
Target :	M21D1
Fields :	>>Cytosolic DNA-sensing pathway;>>Shigellosis;>>Human cytomegalovirus infection;>>Herpes simplex virus 1 infection;>>Human immunodeficiency virus 1 infection;>>Coronavirus disease - COVID-19
Gene Name :	MB21D1 cGAS C6orf150
Protein Name :	M21D1
Human Gene Id :	115004
Human Swiss Prot No :	Q8N884
Immunogen :	Synthesized peptide derived from human M21D1 AA range: 35-85
Specificity :	This antibody detects endogenous levels of M21D1 at Human
Formulation :	Liquid in PBS containing 50% glycerol, 0.5% BSA and 0.02% sodium azide.
Source :	Polyclonal, Rabbit,IgG
Dilution :	WB 1:500-2000
Purification :	The antibody was affinity-purified from rabbit antiserum by affinity-chromatography using epitope-specific immunogen.
Concentration :	1 mg/ml
Storage Stability :	-15°C to -25°C/1 year(Do not lower than -25°C)
Molecularweight :	57kD

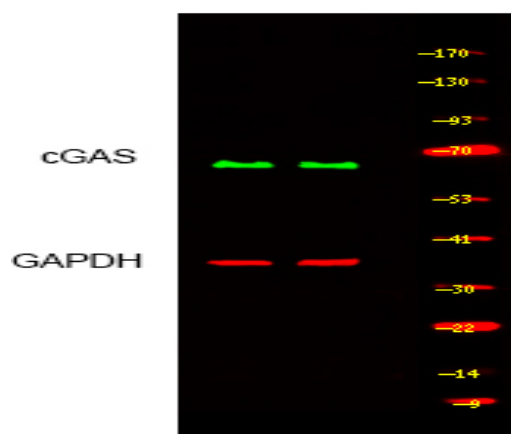
Subcellular Location :

Nucleus . Chromosome . Cell membrane ; Peripheral membrane protein . Cytoplasm, cytosol . Mainly localizes in the nucleus, and at low level in the cytosol (PubMed:31808743, PubMed:31544964). On chromosomes, enriched on centromeric satellite and LINE DNA repeat elements (PubMed:30811988). Exported from the nucleus to the cytosol in a XPO1/CRM1 via the nuclear export signal in response to DNA stimulation (PubMed:33406424). Outside the nucleus, localizes at the cell membrane as a peripheral membrane protein in resting conditions: association to the cell membrane is mediated via binding to phosphatidylinositol 4,5-bisphosphate (PtdIns(4,5)P2) (PubMed:30827685). Localization at the cell membrane is required to limit the recognition of self-DNA (PubMed:30827685). Following detection of double-str

Expression :

Expressed in the monocytic cell line THP1.

Products Images



Western blot analysis of lysates from MCF-7 and THP1 cells, primary antibody was diluted at 1:1000, 4° over night