

CP089 rabbit pAb

Catalog No :	YT7047
Reactivity :	Human;Mouse
Applications :	WB
Target :	CP089
Gene Name :	C16orf89 UNQ904/PRO1925
Protein Name :	CP089
Human Gene Id :	146556
Human Swiss Prot No :	Q6UX73
Mouse Gene Id :	239691
Mouse Swiss Prot No :	Q3UST5
Immunogen :	Synthesized peptide derived from human CP089 AA range: 226-276
Specificity :	This antibody detects endogenous levels of CP089 at Human/Mouse
Formulation :	Liquid in PBS containing 50% glycerol, 0.5% BSA and 0.02% sodium azide.
Source :	Polyclonal, Rabbit,IgG
Dilution :	WB 1:500-2000
Purification :	The antibody was affinity-purified from rabbit antiserum by affinity-chromatography using epitope-specific immunogen.
Concentration :	1 mg/ml
Storage Stability :	-15°C to -25°C/1 year(Do not lower than -25°C)

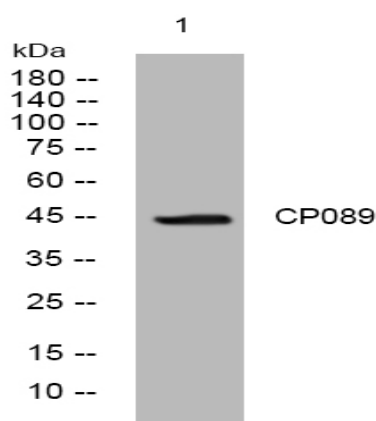
Molecularweight : 44kD

Background : This gene is expressed predominantly in the thyroid. Based on expression patterns similar to thyroid transcription factors and proteins, this gene may function in the development and function of the thyroid. Multiple transcript variants encoding different isoforms have been found for this gene. [provided by RefSeq, Oct 2011],

Subcellular Location : Secreted .

Expression : Predominantly expressed in thyroid tissue.

Products Images



Western blot analysis of lysates from HpeG2 cells, primary antibody was diluted at 1:1000, 4° over night