

NXPE2 rabbit pAb

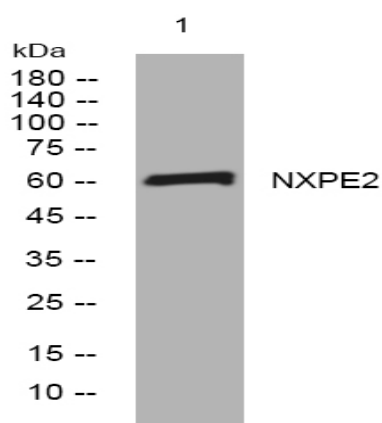
Catalog No :	YT7042
Reactivity :	Human;Mouse
Applications :	WB
Target :	NXPE2
Gene Name :	NXPE2 FAM55B
Protein Name :	NXPE2
Human Gene Id :	120406
Human Swiss Prot No :	Q96DL1
Mouse Gene Id :	78252
Mouse Swiss Prot No :	Q3U095
Immunogen :	Synthesized peptide derived from human NXPE2 AA range: 8-58
Specificity :	This antibody detects endogenous levels of NXPE2 at Human/Mouse
Formulation :	Liquid in PBS containing 50% glycerol, 0.5% BSA and 0.02% sodium azide.
Source :	Polyclonal, Rabbit,IgG
Dilution :	WB 1:500-2000
Purification :	The antibody was affinity-purified from rabbit antiserum by affinity-chromatography using epitope-specific immunogen.
Concentration :	1 mg/ml
Storage Stability :	-15°C to -25°C/1 year(Do not lower than -25°C)

Molecularweight : 61kD

Function : caution:The sequence shown here is derived from an Ensembl automatic analysis pipeline and should be considered as preliminary data.,similarity:Belongs to the FAM55 family.,

Subcellular Location : Membrane ; Single-pass membrane protein .

Products Images



Western blot analysis of lysates from THP-1 cells, primary antibody was diluted at 1:1000, 4° over night