

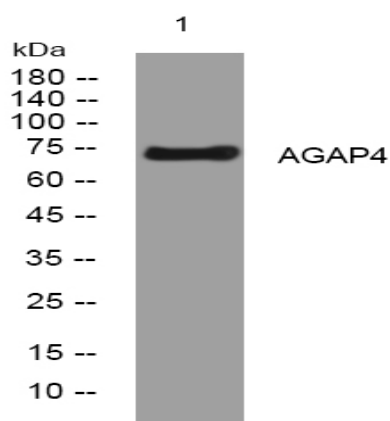
## AGAP4 rabbit pAb

<b>Catalog No :</b>	YT7041
<b>Reactivity :</b>	Human
<b>Applications :</b>	WB
<b>Target :</b>	AGAP4
<b>Fields :</b>	>>Endocytosis
<b>Gene Name :</b>	AGAP4 CTGLF1 MRIP2
<b>Protein Name :</b>	AGAP4
<b>Human Gene Id :</b>	119016
<b>Human Swiss Prot No :</b>	Q96P64
<b>Immunogen :</b>	Synthesized peptide derived from human AGAP4 AA range: 296-346
<b>Specificity :</b>	This antibody detects endogenous levels of AGAP4 at Human
<b>Formulation :</b>	Liquid in PBS containing 50% glycerol, 0.5% BSA and 0.02% sodium azide.
<b>Source :</b>	Polyclonal, Rabbit,IgG
<b>Dilution :</b>	WB 1[?]500-2000
<b>Purification :</b>	The antibody was affinity-purified from rabbit antiserum by affinity-chromatography using epitope-specific immunogen.
<b>Concentration :</b>	1 mg/ml
<b>Storage Stability :</b>	-15°C to -25°C/1 year(Do not lower than -25°C)
<b>Molecularweight :</b>	73kD

**Function :**

function:Putative GTPase-activating protein .,miscellaneous:Encoded by one of the numerous copies of centaurin gamma-like genes clustered in the q11 region of chromosome 10.,similarity:Belongs to the centaurin gamma-like family.,similarity:Contains 1 Arf-GAP domain.,similarity:Contains 1 PH domain.,similarity:Contains 2 ANK repeats.,

## Products Images



Western blot analysis of lysates from AD293 cells, primary antibody was diluted at 1:1000, 4° over night