

SDHL rabbit pAb

Catalog No :	YT7040
Reactivity :	Human;Mouse;Rat
Applications :	WB;ELISA;IHC
Target :	SDHL
Fields :	>>Glycine, serine and threonine metabolism;>>Cysteine and methionine metabolism;>>Valine, leucine and isoleucine biosynthesis;>>Metabolic pathways;>>Carbon metabolism;>>Biosynthesis of amino acids
Gene Name :	SDS SDH
Protein Name :	SDHL
Human Gene Id :	10993
Human Swiss Prot No :	P20132
Mouse Gene Id :	231691
Mouse Swiss Prot No :	Q8VBT2
Rat Gene Id :	25044
Rat Swiss Prot No :	P09367
Immunogen :	Synthesized peptide derived from human SDHL AA range: 207-257
Specificity :	This antibody detects endogenous levels of SDHL at Human/Mouse/Rat
Formulation :	Liquid in PBS containing 50% glycerol, 0.5% BSA and 0.02% sodium azide.
Source :	Polyclonal, Rabbit,IgG
Dilution :	WB 1:500-2000;IHC 1:50-300; ELISA 2000-20000

Purification : The antibody was affinity-purified from rabbit antiserum by affinity-chromatography using epitope-specific immunogen.

Concentration : 1 mg/ml

Storage Stability : -15°C to -25°C/1 year(Do not lower than -25°C)

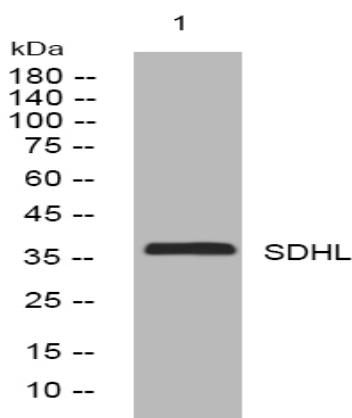
Molecularweight : 36kD

Background : This gene encodes one of three enzymes that are involved in metabolizing serine and glycine. L-serine dehydratase converts L-serine to pyruvate and ammonia and requires pyridoxal phosphate as a cofactor. The encoded protein can also metabolize threonine to NH₄⁺ and 2-ketobutyrate. The encoded protein is found predominantly in the liver. [provided by RefSeq, Jul 2008],

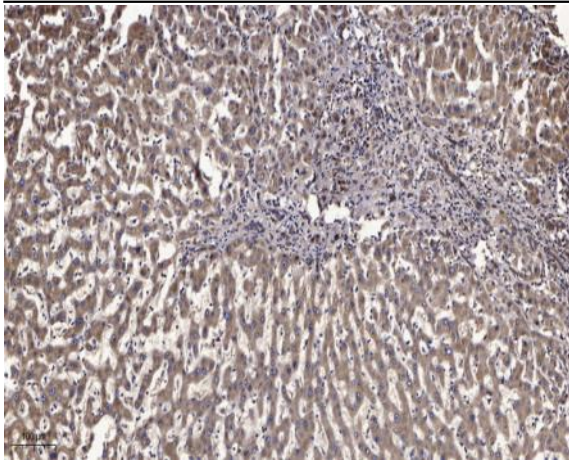
Function : catalytic activity:L-serine = pyruvate + NH(3).,cofactor:Pyridoxal phosphate.,pathway:Carbohydrate biosynthesis; gluconeogenesis.,similarity:Belongs to the serine/threonine dehydratase family.,subunit:Homodimer.,

Subcellular Location : Cytoplasm.

Products Images



Western blot analysis of lysates from HpeG2 cells, primary antibody was diluted at 1:1000, 4° over night



Immunohistochemical analysis of paraffin-embedded human liver cancer. 1, Antibody was diluted at 1:200(4° overnight). 2, Tris-EDTA,pH9.0 was used for antigen retrieval. 3,Secondary antibody was diluted at 1:200(room temperature, 45min).