

TIM8B rabbit pAb

Catalog No :	YT7036
Reactivity :	Human;Mouse;Rat
Applications :	IHC;IF
Target :	TIM8B
Gene Name :	TIMM8B DDP2 DDPL TIM8B
Protein Name :	TIM8B
Human Gene Id :	26521
Human Swiss Prot No :	Q9Y5J9
Mouse Gene Id :	30057
Mouse Swiss Prot No :	P62077
Rat Gene Id :	64372
Rat Swiss Prot No :	P62078
Immunogen :	Synthesized peptide derived from human TIM8B AA range: 1-51
Specificity :	This antibody detects endogenous levels of TIM8B at Human/Mouse/Rat
Formulation :	Liquid in PBS containing 50% glycerol, 0.5% BSA and 0.02% sodium azide.
Source :	Polyclonal, Rabbit,IgG
Dilution :	IHC 1:50-200. IF 1:50-200
Purification :	The antibody was affinity-purified from rabbit antiserum by affinity-chromatography using epitope-specific immunogen.

Concentration : 1 mg/ml

Storage Stability : -15°C to -25°C/1 year(Do not lower than -25°C)

Molecularweight : 9kD

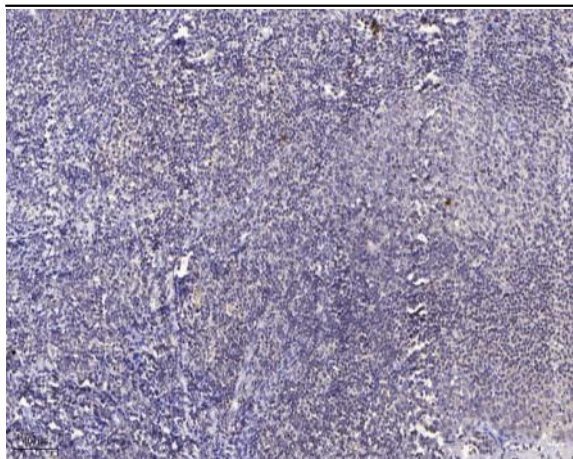
Background : This gene encodes a member of a well-conserved family of proteins with similarity to yeast Tim mitochondrial import proteins. This gene is encoded by a nuclear gene and is transported into the intermembrane space of the mitochondrion. When formed into complexes, these proteins guide membrane-spanning proteins across the mitochondrial intermembrane space before they are added into the mitochondrial inner membrane. This gene is adjacent to succinate dehydrogenase, subunit D (SDHD), in which mutations have been found in affected members of families with hereditary paraganglioma.[provided by RefSeq, Aug 2009],

Function : domain:The twin CX3C motif contains 4 conserved Cys residues that form 2 disulfide bonds in the mitochondrial intermembrane space. However, during the transit of TIMM8B from cytoplasm into mitochondrion, the Cys residues probably coordinate zinc, thereby preventing folding and allowing its transfer across mitochondrial outer membrane.,function:Probable mitochondrial intermembrane chaperone that participates in the import and insertion of some multi-pass transmembrane proteins into the mitochondrial inner membrane. Also required for the transfer of beta-barrel precursors from the TOM complex to the sorting and assembly machinery (SAM complex) of the outer membrane. Acts as a chaperone-like protein that protects the hydrophobic precursors from aggregation and guide them through the mitochondrial intermembrane space.,similarity:Belongs to the small Tim family.,subunit:Heterohexamer; possibl

Subcellular Location : Mitochondrion inner membrane ; Peripheral membrane protein ; Intermembrane side .

Expression : Ubiquitous, with highest expression in heart, kidney, liver and skeletal muscle.

Products Images



Immunohistochemical analysis of paraffin-embedded human tonsil. 1, Antibody was diluted at 1:200(4° overnight). 2, Tris-EDTA,pH9.0 was used for antigen retrieval. 3,Secondary antibody was diluted at 1:200(room temperature, 30min).