

**S20A2 rabbit pAb**

<b>Catalog No :</b>	YT7035
<b>Reactivity :</b>	Human;Mouse;Rat
<b>Applications :</b>	WB
<b>Target :</b>	S20A2
<b>Gene Name :</b>	SLC20A2 GLVR2 PIT2
<b>Protein Name :</b>	S20A2
<b>Human Gene Id :</b>	6575
<b>Human Swiss Prot No :</b>	Q08357
<b>Mouse Gene Id :</b>	20516
<b>Mouse Swiss Prot No :</b>	Q80UP8
<b>Rat Gene Id :</b>	29502
<b>Rat Swiss Prot No :</b>	Q63488
<b>Immunogen :</b>	Synthesized peptide derived from human S20A2 AA range: 370-420
<b>Specificity :</b>	This antibody detects endogenous levels of S20A2 at Human/Mouse/Rat
<b>Formulation :</b>	Liquid in PBS containing 50% glycerol, 0.5% BSA and 0.02% sodium azide.
<b>Source :</b>	Polyclonal, Rabbit,IgG
<b>Dilution :</b>	WB 1:500-2000
<b>Purification :</b>	The antibody was affinity-purified from rabbit antiserum by affinity-chromatography using epitope-specific immunogen.

**Concentration :** 1 mg/ml

**Storage Stability :** -15°C to -25°C/1 year(Do not lower than -25°C)

**Molecularweight :** 72kD

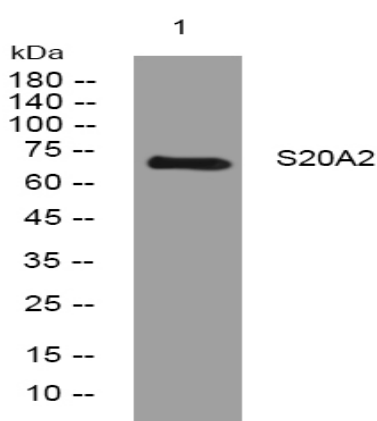
**Background :** This gene encodes a member of the inorganic phosphate transporter family. The encoded protein is a type 3 sodium-dependent phosphate symporter that plays an important role in phosphate homeostasis by mediating cellular phosphate uptake. The encoded protein also confers susceptibility to viral infection as a gamma-retroviral receptor. Mutations in this gene may play a role in familial idiopathic basal ganglia calcification. Alternatively spliced transcript variants encoding multiple isoforms have been observed for this gene. [provided by RefSeq, Mar 2012],

**Function :** function:Sodium-phosphate symporter which seems to play a fundamental housekeeping role in phosphate transport by absorbing phosphate from interstitial fluid for normal cellular functions such as cellular metabolism, signal transduction, and nucleic acid and lipid synthesis. In vitro, sodium-dependent phosphate uptake is not significantly affected by acidic and alkaline conditions, however sodium-independent phosphate uptake occurs at acidic conditions. May play a role in extracellular matrix, cartilage and vascular calcification. Functions as a retroviral receptor and confers human cells susceptibility to infection to amphotropic murine leukemia virus (A-MuLV), 10A1 murine leukemia virus (10A1 MLV) and some feline leukemia virus subgroup B (FeLV-B) variants.,induction:Increased by phosphate depletion in osteosarcoma cell lines.,similarity:Belongs to the inorganic phosphate transporter

**Subcellular Location :** Cell membrane ; Multi-pass membrane protein .

**Expression :** Ubiquitously expressed.

## Products Images



Western blot analysis of lysates from 3T3 cells, primary antibody was diluted at 1:1000, 4° over night