

PMM1 rabbit pAb

Catalog No :	YT7034
Reactivity :	Human;Mouse
Applications :	WB;IHC
Target :	PMM1
Fields :	>>Fructose and mannose metabolism;>>Amino sugar and nucleotide sugar metabolism;>>Metabolic pathways;>>Biosynthesis of cofactors;>>Biosynthesis of nucleotide sugars
Gene Name :	PMM1 PMMH22
Protein Name :	PMM1
Human Gene Id :	5372
Human Swiss Prot No :	Q92871
Mouse Gene Id :	29858
Mouse Swiss Prot No :	O35621
Immunogen :	Synthesized peptide derived from human PMM1 AA range: 18-68
Specificity :	This antibody detects endogenous levels of PMM1 at Human/Mouse
Formulation :	Liquid in PBS containing 50% glycerol, 0.5% BSA and 0.02% sodium azide.
Source :	Polyclonal, Rabbit,IgG
Dilution :	WB 1:500-2000;IHC 1:50-300
Purification :	The antibody was affinity-purified from rabbit antiserum by affinity-chromatography using epitope-specific immunogen.
Concentration :	1 mg/ml

Storage Stability : -15°C to -25°C/1 year(Do not lower than -25°C)

Molecularweight : 29kD

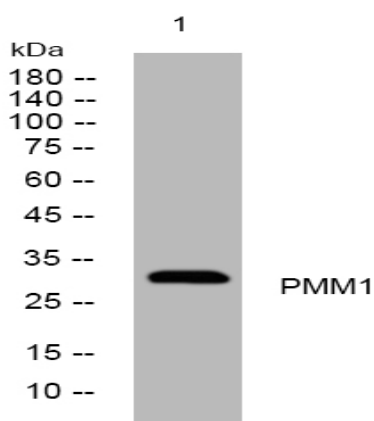
Background : Phosphomannomutase catalyzes the conversion between D-mannose 6-phosphate and D-mannose 1-phosphate which is a substrate for GDP-mannose synthesis. GDP-mannose is used for synthesis of dolichol-phosphate-mannose, which is essential for N-linked glycosylation and thus the secretion of several glycoproteins as well as for the synthesis of glycosyl-phosphatidyl-inositol (GPI) anchored proteins. [provided by RefSeq, Jul 2008],

Function : catalytic activity:Alpha-D-mannose 1-phosphate = D-mannose 6-phosphate.,function:Involved in the synthesis of the GDP-mannose and dolichol-phosphate-mannose required for a number of critical mannosyl transfer reactions.,pathway:Nucleotide-sugar biosynthesis; GDP-D-mannose biosynthesis; alpha-D-mannose 1-phosphate from D-fructose 6-phosphate: step 2/2.,similarity:Belongs to the eukaryotic PMM family.,tissue specificity:Strong expression in liver, heart, brain, and pancreas; lower expression in skeletal muscle.,

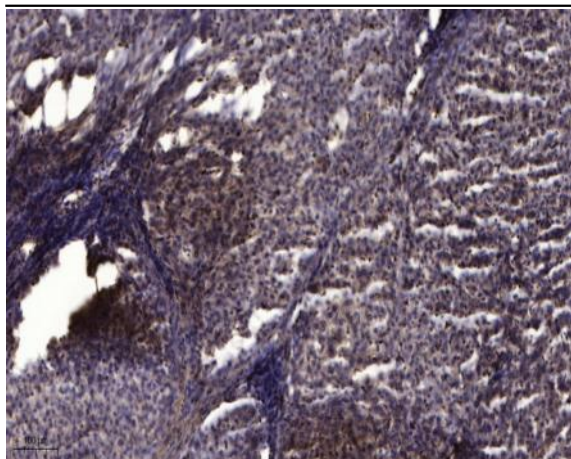
Subcellular Location : Cytoplasm .

Expression : Strong expression in liver, heart, brain, and pancreas; lower expression in skeletal muscle.

Products Images



Western blot analysis of lysates from HeLa cells, primary antibody was diluted at 1:1000, 4° over night



Immunohistochemical analysis of paraffin-embedded human liver cancer. 1, Antibody was diluted at 1:200(4° overnight). 2, Tris-EDTA,pH9.0 was used for antigen retrieval. 3,Secondary antibody was diluted at 1:200(room temperature, 45min).