

DDA1 rabbit pAb

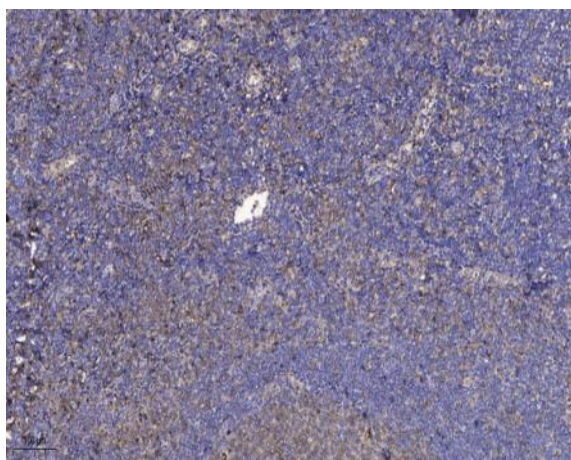
Catalog No :	YT7033
Reactivity :	Human;Mouse
Applications :	IHC;IF
Target :	DDA1
Gene Name :	DDA1 C19orf58 PCIA1
Protein Name :	DDA1
Human Gene Id :	79016
Human Swiss Prot No :	Q9BW61
Mouse Gene Id :	66498
Mouse Swiss Prot No :	Q9D9Z5
Immunogen :	Synthesized peptide derived from human DDA1 AA range: 49-99
Specificity :	This antibody detects endogenous levels of DDA1 at Human/Mouse
Formulation :	Liquid in PBS containing 50% glycerol, 0.5% BSA and 0.02% sodium azide.
Source :	Polyclonal, Rabbit,IgG
Dilution :	IHC 1:50-200. IF 1:50-200
Purification :	The antibody was affinity-purified from rabbit antiserum by affinity-chromatography using epitope-specific immunogen.
Concentration :	1 mg/ml
Storage Stability :	-15°C to -25°C/1 year(Do not lower than -25°C)

Molecularweight : 11kD

Function :

function:May be involved in ubiquitination and subsequent proteasomal degradation of target proteins. Component of the DDD-E2 complexes which may provide a platform for interaction with CUL4A and WD repeat proteins.,similarity:Belongs to the DDA1 family.,subunit:Part of the DDD core complex containing DET1, DDA1 and DDB1. The DDD core complex recruits a specific UBE2E enzyme, such as UBE2E1, UBE2E2 UBE2E3, to form specific DDD-E2 complexes.,

Products Images



Immunohistochemical analysis of paraffin-embedded human tonsil. 1, Antibody was diluted at 1:200(4° overnight). 2, Tris-EDTA,pH9.0 was used for antigen retrieval. 3,Secondary antibody was diluted at 1:200(room temperature, 30min).