

TYDP2 rabbit pAb

Catalog No :	YT7032
Reactivity :	Human;Mouse;Rat
Applications :	WB
Target :	TYDP2
Gene Name :	TDP2 EAP2 TTRAP AD-022
Protein Name :	TYDP2
Human Gene Id :	51567
Human Swiss Prot No :	O95551
Mouse Gene Id :	56196
Mouse Swiss Prot No :	Q9JJX7
Rat Gene Id :	498749
Rat Swiss Prot No :	Q3T1H5
Immunogen :	Synthesized peptide derived from human TYDP2 AA range: 261-311
Specificity :	This antibody detects endogenous levels of TYDP2 at Human/Mouse/Rat
Formulation :	Liquid in PBS containing 50% glycerol, 0.5% BSA and 0.02% sodium azide.
Source :	Polyclonal, Rabbit,IgG
Dilution :	WB 1:500-2000
Purification :	The antibody was affinity-purified from rabbit antiserum by affinity-chromatography using epitope-specific immunogen.

Concentration : 1 mg/ml

Storage Stability : -15°C to -25°C/1 year (Do not lower than -25°C)

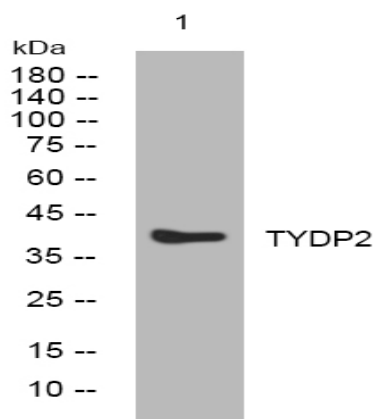
Molecularweight : 40kD

Background : This gene encodes a member of a superfamily of divalent cation-dependent phosphodiesterases. The encoded protein associates with CD40, tumor necrosis factor (TNF) receptor-75 and TNF receptor associated factors (TRAFs), and inhibits nuclear factor-kappa-B activation. This protein has sequence and structural similarities with APE1 endonuclease, which is involved in both DNA repair and the activation of transcription factors. [provided by RefSeq, Jul 2008],

Subcellular Location : Nucleus . Nucleus, PML body . Nucleus, nucleolus . Cytoplasm. Localizes to nucleolar cavities following stress; localization to nucleolus is dependent on PML protein. .; Cytoplasm . (Microbial infection) In case of infection by picornavirus, relocalizes to cytoplasmic sites distinct from those containing viral proteins associated with RNA replication or encapsidation. .

Expression : Widely expressed (PubMed:10764746). Highly expressed in various brain regions, including the frontal and occipital lobes, the hippocampus, the striatum and the cerebellum (PubMed:24658003).

Products Images



Western blot analysis of lysates from 293T cells, primary antibody was diluted at 1:1000, 4°C over night