

## EXOS1 rabbit pAb

<b>Catalog No :</b>	YT7031
<b>Reactivity :</b>	Human;Mouse
<b>Applications :</b>	WB
<b>Target :</b>	EXOS1
<b>Fields :</b>	>>RNA degradation
<b>Gene Name :</b>	EXOSC1 CSL4 CGI-108
<b>Protein Name :</b>	EXOS1
<b>Human Gene Id :</b>	51013
<b>Human Swiss Prot No :</b>	Q9Y3B2
<b>Mouse Gene Id :</b>	66583
<b>Mouse Swiss Prot No :</b>	Q9DAA6
<b>Immunogen :</b>	Synthesized peptide derived from human EXOS1 AA range: 93-143
<b>Specificity :</b>	This antibody detects endogenous levels of EXOS1 at Human/Mouse
<b>Formulation :</b>	Liquid in PBS containing 50% glycerol, 0.5% BSA and 0.02% sodium azide.
<b>Source :</b>	Polyclonal, Rabbit,IgG
<b>Dilution :</b>	WB 1[?]500-2000
<b>Purification :</b>	The antibody was affinity-purified from rabbit antiserum by affinity-chromatography using epitope-specific immunogen.
<b>Concentration :</b>	1 mg/ml

**Storage Stability :** -15°C to -25°C/1 year (Do not lower than -25°C)

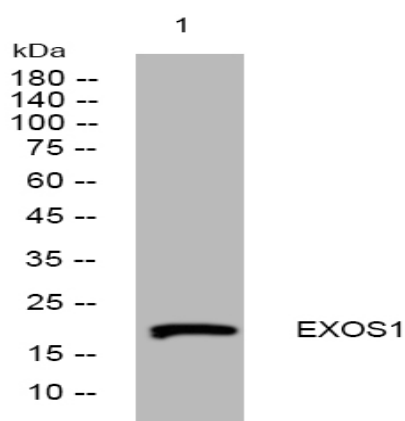
**Molecularweight :** 21kD

**Background :** This gene encodes a core component of the exosome. The mammalian exosome is required for rapid degradation of AU rich element-containing RNAs but not for poly(A) shortening. The association of this protein with the exosome is mediated by protein-protein interactions with ribosomal RNA-processing protein 42 and ribosomal RNA-processing protein 46. Alternative splicing of this gene results in multiple transcript variants. [provided by RefSeq, Jan 2016],

**Function :** domain: The N- and C-terminal regions of the protein are required for interaction with RRP46., function: Component of the exosome 3'→5' exoribonuclease complex, a complex that degrades inherently unstable mRNAs containing AU-rich elements (AREs) within their 3' untranslated regions. Required for the 3' processing of the 7S pre-rRNA to the mature 5.8S rRNA. Has a 3'-5' exonuclease activity., similarity: Contains 1 S1 motif domain., subunit: Component of the exosome multienzyme ribonuclease complex composed of at least 11 proteins: EXOSC1/CSL4, EXOSC2/RRP4, EXOSC3/RRP40, EXOSC4/RRP41, EXOSC5/RRP46, EXOSC6/MTR3, EXOSC7/RRP42, EXOSC8/RRP43, EXOSC9/Scl-75, DIS3/RRP44, and EXOSC10/Scl-100 (only in the nuclear complex). Interacts directly with EXOSC5, EXOSC6, EXOSC7 and EXOSC8. Also associated with the GTPase Ran.,

**Subcellular Location :** Nucleus, nucleolus . Nucleus . Cytoplasm .

## Products Images



Western blot analysis of lysates from U2OS cells, primary antibody was diluted at 1:1000, 4° over night