

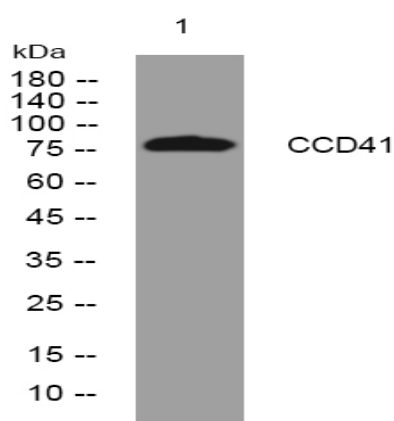
## CCD41 rabbit pAb

|                              |                                                                                                                       |
|------------------------------|-----------------------------------------------------------------------------------------------------------------------|
| <b>Catalog No :</b>          | YT7027                                                                                                                |
| <b>Reactivity :</b>          | Human;Mouse;Rat                                                                                                       |
| <b>Applications :</b>        | WB                                                                                                                    |
| <b>Target :</b>              | CCD41                                                                                                                 |
| <b>Gene Name :</b>           | CCDC41                                                                                                                |
| <b>Protein Name :</b>        | CCD41                                                                                                                 |
| <b>Human Gene Id :</b>       | 51134                                                                                                                 |
| <b>Human Swiss Prot No :</b> | Q9Y592                                                                                                                |
| <b>Mouse Gene Id :</b>       | 77048                                                                                                                 |
| <b>Mouse Swiss Prot No :</b> | Q9D5R3                                                                                                                |
| <b>Rat Gene Id :</b>         | 366872                                                                                                                |
| <b>Rat Swiss Prot No :</b>   | Q66H89                                                                                                                |
| <b>Immunogen :</b>           | Synthesized peptide derived from human CCD41 AA range: 321-371                                                        |
| <b>Specificity :</b>         | This antibody detects endogenous levels of CCD41 at Human/Mouse/Rat                                                   |
| <b>Formulation :</b>         | Liquid in PBS containing 50% glycerol, 0.5% BSA and 0.02% sodium azide.                                               |
| <b>Source :</b>              | Polyclonal, Rabbit,IgG                                                                                                |
| <b>Dilution :</b>            | WB 1:500-2000                                                                                                         |
| <b>Purification :</b>        | The antibody was affinity-purified from rabbit antiserum by affinity-chromatography using epitope-specific immunogen. |

**Concentration :** 1 mg/ml**Storage Stability :** -15°C to -25°C/1 year (Do not lower than -25°C)**Molecularweight :** 76kD

**Subcellular Location :** Cytoplasm, cytoskeleton, microtubule organizing center, centrosome, centriole . Localizes specifically to the distal appendage region of the centriole, which anchors the mother centriole to the plasma membrane. Localizes to centrioles at all stages of the cell cycle, including mitosis.

## Products Images



Western blot analysis of lysates from HpeG2 cells, primary antibody was diluted at 1:1000, 4° over night