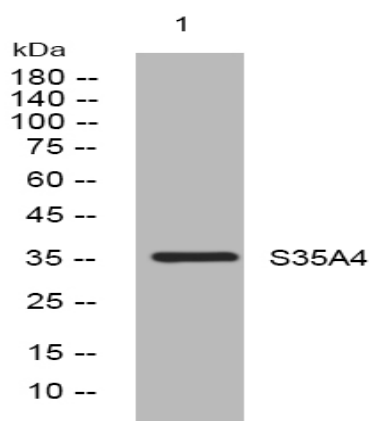


S35A4 rabbit pAb

Catalog No :	YT7025
Reactivity :	Human;Mouse;Rat
Applications :	WB
Target :	S35A4
Gene Name :	SLC35A4
Protein Name :	S35A4
Human Gene Id :	113829
Human Swiss Prot No :	Q96G79
Mouse Gene Id :	67843
Mouse Swiss Prot No :	Q9D321
Rat Gene Id :	257647
Rat Swiss Prot No :	Q91ZR7
Immunogen :	Synthesized peptide derived from human S35A4 AA range: 104-154
Specificity :	This antibody detects endogenous levels of S35A4 at Human/Mouse/Rat
Formulation :	Liquid in PBS containing 50% glycerol, 0.5% BSA and 0.02% sodium azide.
Source :	Polyclonal, Rabbit,IgG
Dilution :	WB 1:500-2000
Purification :	The antibody was affinity-purified from rabbit antiserum by affinity-chromatography using epitope-specific immunogen.

Concentration : 1 mg/ml**Storage Stability :** -15°C to -25°C/1 year(Do not lower than -25°C)**Molecularweight :** 36kD**Function :** miscellaneous:Classified as NST family 1 subfamily D in a phylogenic study. Family 1 seems to be the most recent in evolution.,similarity:Belongs to the nucleotide-sugar transporter family. SLC35A subfamily.,**Subcellular Location :** Golgi apparatus membrane ; Multi-pass membrane protein .

Products Images



Western blot analysis of lysates from PC-12 cells, primary antibody was diluted at 1:1000, 4° over night