

ZNT6 rabbit pAb

Catalog No :	YT7016
Reactivity :	Human;Mouse
Applications :	WB
Target :	ZNT6
Gene Name :	SLC30A6 ZNT6
Protein Name :	ZNT6
Human Gene Id :	55676
Human Swiss Prot No :	Q6NXT4
Mouse Gene Id :	210148
Mouse Swiss Prot No :	Q8BJM5
Immunogen :	Synthesized peptide derived from human ZNT6 AA range: 58-108
Specificity :	This antibody detects endogenous levels of ZNT6 at Human/Mouse
Formulation :	Liquid in PBS containing 50% glycerol, 0.5% BSA and 0.02% sodium azide.
Source :	Polyclonal, Rabbit,IgG
Dilution :	WB 1:500-2000
Purification :	The antibody was affinity-purified from rabbit antiserum by affinity-chromatography using epitope-specific immunogen.
Concentration :	1 mg/ml
Storage Stability :	-15°C to -25°C/1 year(Do not lower than -25°C)

Molecularweight : 51kD

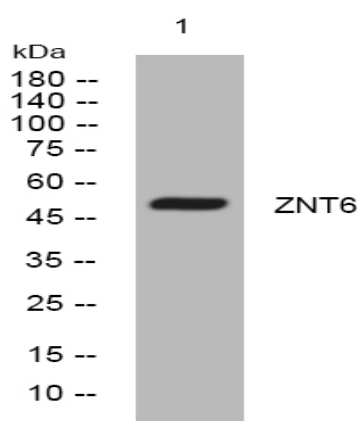
Background : This gene encodes a member of a family of proteins that function as zinc transporters. This protein can regulate subcellular levels of zinc in the Golgi and vesicles. Expression of this gene is altered in the Alzheimer's disease brain plaques. [provided by RefSeq, Aug 2016],

Function : function:Zinc-efflux transporter which allocates the cytoplasmic zinc to the trans-Golgi network (TGN) as well as the vesicular compartment.,miscellaneous:Seems to have lost most of the histidine residues in the loop between the fourth and fifth transmembrane regions and appears to exert transport function by forming complexes with znt5.,similarity:Belongs to the cation diffusion facilitator (CDF) transporter (TC 2.A.4) family. SLC30A subfamily.,subcellular location:Found in vesicles.,subunit:Heterooligomer. Interacts with ZNT5.,tissue specificity:Expressed in brain; especially in cerebellum, hippocampus, parahippocampal gyrus, superior and middle temporal gyrus. Also expressed in B cells, colon, eye, and lung. Lower expression was present in bone, brain, cervix, ear, heart, kidney, muscle, nerve, pancreas, prostate, skin, stomach, and testis.,

Subcellular Location : Golgi apparatus, trans-Golgi network membrane; Multi-pass membrane protein. Found in vesicles. .

Expression : Expressed in brain; especially in cerebellum, hippocampus, parahippocampal gyrus, superior and middle temporal gyrus. Also expressed in B-cells, colon, eye, and lung. Lower expression was present in bone, brain, cervix, ear, heart, kidney, muscle, nerve, pancreas, prostate, skin, stomach, and testis.

Products Images



Western blot analysis of lysates from MCF-7 cells, primary antibody was diluted at 1:1000, 4° over night