

SDS3 rabbit pAb

Catalog No :	YT7009
Reactivity :	Human;Mouse
Applications :	WB;IHC
Target :	SDS3
Gene Name :	SUDS3 SAP45 SDS3
Protein Name :	SDS3
Human Gene Id :	64426
Human Swiss Prot No :	Q9H7L9
Mouse Gene Id :	71954
Mouse Swiss Prot No :	Q8BR65
Immunogen :	Synthesized peptide derived from human SDS3 AA range: 96-146
Specificity :	This antibody detects endogenous levels of SDS3 at Human/Mouse
Formulation :	Liquid in PBS containing 50% glycerol, 0.5% BSA and 0.02% sodium azide.
Source :	Polyclonal, Rabbit,IgG
Dilution :	WB 1:500-2000;IHC 1:50-300
Purification :	The antibody was affinity-purified from rabbit antiserum by affinity-chromatography using epitope-specific immunogen.
Concentration :	1 mg/ml
Storage Stability :	-15°C to -25°C/1 year(Do not lower than -25°C)

Molecularweight : 36kD

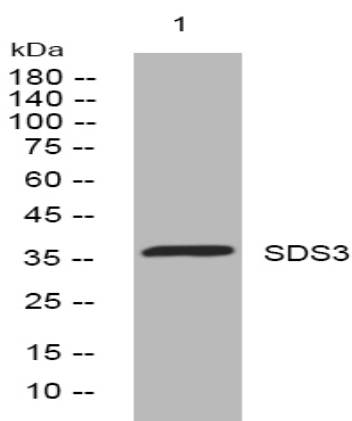
Background : SDS3 is a subunit of the histone deacetylase (see HDAC1; MIM 601241)-dependent SIN3A (MIM 607776) corepressor complex (Fleischer et al., 2003 [PubMed 12724404]).[supplied by OMIM, Mar 2008],

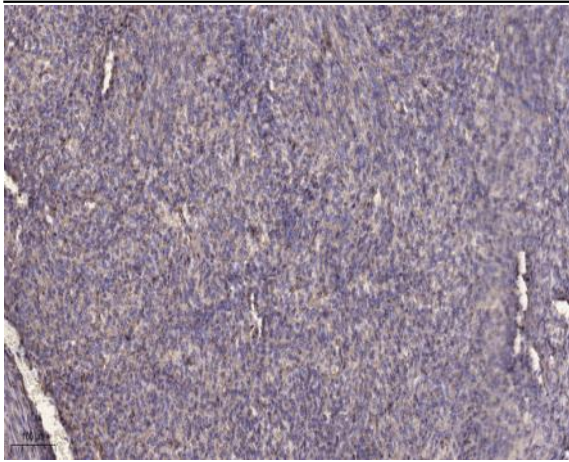
Function : domain:The C-terminus is involved in transcriptional repression by HDAC-independent mechanisms.,function:Regulatory protein which represses transcription and augments histone deacetylase activity of HDAC1. May have a potential role in tumor suppressor pathways (By similarity). May function in the assembly and/or enzymatic activity of the mSin3A corepressor complex or in mediating interactions between the complex and other regulatory complexes.,similarity:Belongs to the SDS3 family.,subunit:Homodimer. Component of the SIN3 histone deacetylase (HDAC) corepressor complex. Interacts with SIN3A. Interaction with SIN3B enhances the interaction between SIN3B and HDAC1 to form a complex (By similarity). Interacts with HCFC1. Component of a mSin3A corepressor complex that contains SIN3A, SAP130, SUDS3/SAP45, ARID4B/SAP180, HDAC1 and HDAC2.,tissue specificity:Expressed in various cancer cell ines.

Subcellular Location : Nucleus .

Expression : Expressed in various cancer cell ines.

Products Images





Immunohistochemical analysis of paraffin-embedded human Colon cancer. 1, Antibody was diluted at 1:200(4° overnight). 2, Tris-EDTA,pH9.0 was used for antigen retrieval. 3,Secondary antibody was diluted at 1:200(room temperature, 45min).