

XPO6 rabbit pAb

Catalog No :	YT7008
Reactivity :	Human;Mouse
Applications :	WB
Target :	XPO6
Fields :	>>Nucleocytoplasmic transport
Gene Name :	XPO6 KIAA0370 RANBP20
Protein Name :	XPO6
Human Gene Id :	23214
Human Swiss Prot No :	Q96QU8
Mouse Gene Id :	74204
Mouse Swiss Prot No :	Q924Z6
Immunogen :	Synthesized peptide derived from human XPO6 AA range: 204-254
Specificity :	This antibody detects endogenous levels of XPO6 at Human/Mouse
Formulation :	Liquid in PBS containing 50% glycerol, 0.5% BSA and 0.02% sodium azide.
Source :	Polyclonal, Rabbit,IgG
Dilution :	WB 1:500-2000
Purification :	The antibody was affinity-purified from rabbit antiserum by affinity-chromatography using epitope-specific immunogen.
Concentration :	1 mg/ml

Storage Stability : -15°C to -25°C/1 year(Do not lower than -25°C)

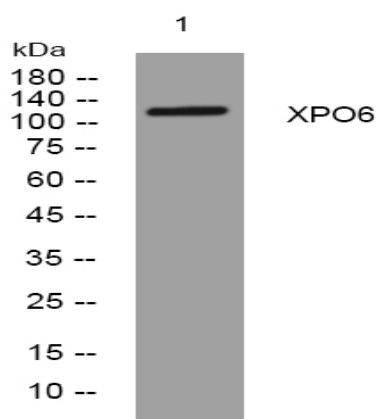
Molecularweight : 124kD

Background : The protein encoded by this gene is a member of the importin-beta family. Members of this family are regulated by the GTPase Ran to mediate transport of cargo across the nuclear envelope. This protein has been shown to mediate nuclear export of profilin-actin complexes. A pseudogene of this gene is located on the long arm of chromosome 14. Alternative splicing results in multiple transcript variants that encode different protein isoforms. [provided by RefSeq, Aug 2012],

Function : function:Mediates the nuclear export of actin and profilin-actin complexes in somatic cells.,similarity:Belongs to the exportin family.,similarity:Contains 1 importin N-terminal domain.,subcellular location:Shuttles between the nucleus and the cytoplasm.,subunit:Found in a complex with XPO6, Ran, ACTB and PFN1. Interacts with ACTB. Interacts with ACTB in a RanGTP-dependent manner.,

Subcellular Location : Nucleus . Cytoplasm . Shuttles between the nucleus and the cytoplasm. .

Products Images



Western blot analysis of lysates from SW480 cells, primary antibody was diluted at 1:1000, 4° over night