

**M4A10 rabbit pAb**

<b>Catalog No :</b>	YT7004
<b>Reactivity :</b>	Human;Mouse
<b>Applications :</b>	WB
<b>Target :</b>	M4A10
<b>Gene Name :</b>	MS4A10 CD20L7 MS4A9
<b>Protein Name :</b>	M4A10
<b>Human Gene Id :</b>	341116
<b>Human Swiss Prot No :</b>	Q96PG2
<b>Mouse Gene Id :</b>	69826
<b>Mouse Swiss Prot No :</b>	Q99N03
<b>Immunogen :</b>	Synthesized peptide derived from human M4A10 AA range: 6-56
<b>Specificity :</b>	This antibody detects endogenous levels of M4A10 at Human/Mouse
<b>Formulation :</b>	Liquid in PBS containing 50% glycerol, 0.5% BSA and 0.02% sodium azide.
<b>Source :</b>	Polyclonal, Rabbit,IgG
<b>Dilution :</b>	WB 1:500-2000
<b>Purification :</b>	The antibody was affinity-purified from rabbit antiserum by affinity-chromatography using epitope-specific immunogen.
<b>Concentration :</b>	1 mg/ml
<b>Storage Stability :</b>	-15°C to -25°C/1 year(Do not lower than -25°C)

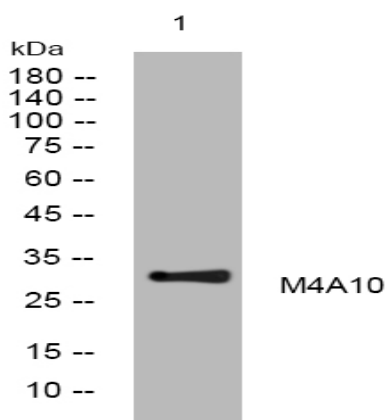
**Molecularweight :** 29kD

**Background :** Most MS4A genes, including MS4A10, encode proteins with at least 4 potential transmembrane domains and N- and C-terminal cytoplasmic domains encoded by distinct exons.[supplied by OMIM, Apr 2004],

**Function :** function:May be involved in signal transduction as a component of a multimeric receptor complex.,similarity:Belongs to the MS4A family.,

**Subcellular Location :** Membrane ; Multi-pass membrane protein .

## Products Images



Western blot analysis of lysates from Hela cells, primary antibody was diluted at 1:1000, 4 ° over night