

NPS3A rabbit pAb

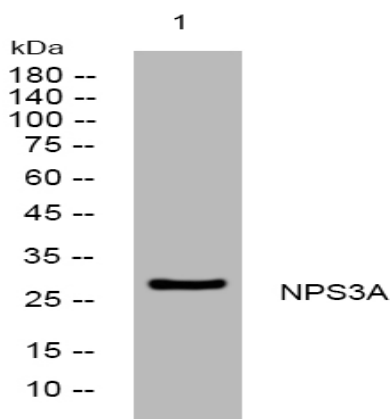
Catalog No :	YT7000
Reactivity :	Human
Applications :	WB
Target :	NPS3A
Gene Name :	NIPSNAP3A NIPSNAP4 HSPC299
Protein Name :	NPS3A
Human Gene Id :	25934
Human Swiss Prot No :	Q9UFN0
Immunogen :	Synthesized peptide derived from human NPS3A AA range: 66-116
Specificity :	This antibody detects endogenous levels of NPS3A at Human
Formulation :	Liquid in PBS containing 50% glycerol, 0.5% BSA and 0.02% sodium azide.
Source :	Polyclonal, Rabbit,IgG
Dilution :	WB 1/500-2000
Purification :	The antibody was affinity-purified from rabbit antiserum by affinity-chromatography using epitope-specific immunogen.
Concentration :	1 mg/ml
Storage Stability :	-15°C to -25°C/1 year(Do not lower than -25°C)
Molecularweight :	27kD
Background :	NIPSNAP3A belongs to a family of proteins with putative roles in vesicular transport (Buechler et al., 2004 [PubMed 15177564]).[supplied by OMIM, Mar 2008],

Function : similarity:Belongs to the NipSnap family.,subcellular location:May be part of some vesicular structure distinct from lysosomal vesicles.,subunit:Interacts with the Salmonella typhimurium virulence protein spiC.,tissue specificity:Ubiquitous. Highly expressed in liver, kidney and muscle. Expressed at intermediate level in brain, heart, colon, thymus, kidney, small intestine, placenta, lung, leukocytes and spleen.,

Subcellular Location : Cytoplasm, cytosol . May be part of some vesicular structure distinct from lysosomal vesicles.

Expression : Ubiquitous. Highly expressed in liver, kidney and muscle. Expressed at intermediate level in brain, heart, colon, thymus, kidney, small intestine, placenta, lung, leukocytes and spleen.

Products Images



Western blot analysis of lysates from MCF-7 cells, primary antibody was diluted at 1:1000, 4° over night