

CCD70 rabbit pAb

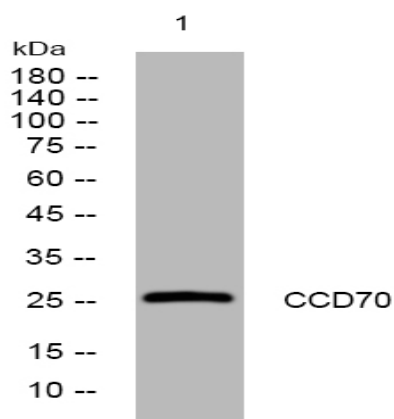
Catalog No :	YT6987
Reactivity :	Human;Mouse
Applications :	WB
Target :	CCD70
Gene Name :	CCDC70
Protein Name :	CCD70
Human Gene Id :	83446
Human Swiss Prot No :	Q6NSX1
Mouse Gene Id :	67929
Mouse Swiss Prot No :	Q9D9B0
Immunogen :	Synthesized peptide derived from human CCD70 AA range: 149-199
Specificity :	This antibody detects endogenous levels of CCD70 at Human/Mouse
Formulation :	Liquid in PBS containing 50% glycerol, 0.5% BSA and 0.02% sodium azide.
Source :	Polyclonal, Rabbit,IgG
Dilution :	WB 1:500-2000
Purification :	The antibody was affinity-purified from rabbit antiserum by affinity-chromatography using epitope-specific immunogen.
Concentration :	1 mg/ml
Storage Stability :	-15°C to -25°C/1 year(Do not lower than -25°C)

Molecularweight : 26kD

Function : caution:It is uncertain whether Met-1 or Met-12 is the initiator.,

Subcellular Location : Mitochondrion .

Products Images



Western blot analysis of lysates from 3T3 cells, primary antibody was diluted at 1:1000, 4° over night