

WWC3 rabbit pAb

Catalog No :	YT6986
Reactivity :	Human
Applications :	WB
Target :	WWC3
Gene Name :	WWC3 KIAA1280
Protein Name :	WWC3
Human Gene Id :	55841
Human Swiss Prot No :	Q9ULE0
Immunogen :	Synthesized peptide derived from human WWC3 AA range: 363-413
Specificity :	This antibody detects endogenous levels of WWC3 at Human
Formulation :	Liquid in PBS containing 50% glycerol, 0.5% BSA and 0.02% sodium azide.
Source :	Polyclonal, Rabbit,IgG
Dilution :	WB 1:500-2000
Purification :	The antibody was affinity-purified from rabbit antiserum by affinity-chromatography using epitope-specific immunogen.
Concentration :	1 mg/ml
Storage Stability :	-15 °C to -25 °C/1 year(Do not lower than -25 °C)
Molecularweight :	120kD
Background :	This gene encodes a member of the WWC family of proteins, which also includes the WWC1 (KIBRA) gene product and the WWC2 gene product. The protein encoded by this gene includes a C2 domain, which is known to mediate

homodimerization in the related WWC1 gene product. [provided by RefSeq, Sep 2011],

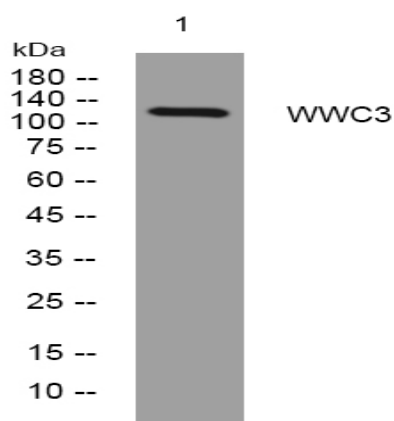
Function :

similarity:Belongs to the WWC family.,similarity:Contains 1 C2 domain.,

Subcellular Location :

cytosol,

Products Images



Western blot analysis of lysates from KB cells, primary antibody was diluted at 1:1000, 4° over night