

CDC26 rabbit pAb

Catalog No :	YT6979
Reactivity :	Human;Mouse;Rat
Applications :	IHC;IF
Target :	CDC26
Fields :	>>Cell cycle;>>Oocyte meiosis;>>Ubiquitin mediated proteolysis;>>Progesterone-mediated oocyte maturation;>>Human T-cell leukemia virus 1 infection
Gene Name :	CDC26 ANAPC12 C9orf17
Protein Name :	CDC26
Human Gene Id :	246184
Human Swiss Prot No :	Q8NHZ8
Mouse Gene Id :	66440
Mouse Swiss Prot No :	Q99JP4
Rat Gene Id :	366381
Rat Swiss Prot No :	Q6YDN7
Immunogen :	Synthesized peptide derived from human CDC26 AA range: 21-71
Specificity :	This antibody detects endogenous levels of CDC26 at Human/Mouse/Rat
Formulation :	Liquid in PBS containing 50% glycerol, 0.5% BSA and 0.02% sodium azide.
Source :	Polyclonal, Rabbit,IgG
Dilution :	IHC 1:50-200. IF 1:50-200

Purification : The antibody was affinity-purified from rabbit antiserum by affinity-chromatography using epitope-specific immunogen.

Concentration : 1 mg/ml

Storage Stability : -15°C to -25°C/1 year(Do not lower than -25°C)

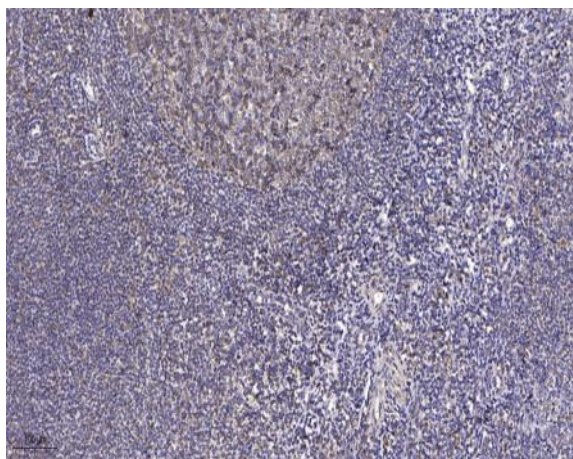
Molecularweight : 9kD

Background : The protein encoded by this gene is highly similar to *Saccharomyces cerevisiae* Cdc26, a component of cell cycle anaphase-promoting complex (APC). APC is composed of a group of highly conserved proteins and functions as a cell cycle-regulated ubiquitin-protein ligase. APC thus is responsible for the cell cycle regulated proteolysis of various proteins. [provided by RefSeq, Jul 2008],

Function : function:Component of the anaphase promoting complex/cyclosome (APC/C), a cell cycle-regulated E3 ubiquitin-protein ligase that controls progression through mitosis and the G1 phase of the cell cycle. May recruit the E2 ubiquitin-conjugating enzymes to the complex.,pathway:Protein modification; protein ubiquitination.,PTM:Phosphorylated upon DNA damage, probably by ATM or ATR.,similarity:Belongs to the CDC26 family.,subunit:The APC/C is composed of at least 11 subunits.,

Subcellular Location : Nucleus .

Products Images



Immunohistochemical analysis of paraffin-embedded human tonsil. 1, Antibody was diluted at 1:200(4° overnight). 2, Tris-EDTA,pH9.0 was used for antigen retrieval. 3,Secondary antibody was diluted at 1:200(room temperature, 45min).