

SPT22 rabbit pAb

Catalog No :	YT6978
Reactivity :	Human;Mouse
Applications :	WB;IHC
Target :	SPT22
Gene Name :	SPATA22
Protein Name :	SPT22
Human Gene Id :	84690
Human Swiss Prot No :	Q8NHS9
Mouse Gene Id :	380709
Mouse Swiss Prot No :	Q5SV06
Immunogen :	Synthesized peptide derived from human SPT22 AA range: 196-246
Specificity :	This antibody detects endogenous levels of SPT22 at Human/Mouse
Formulation :	Liquid in PBS containing 50% glycerol, 0.5% BSA and 0.02% sodium azide.
Source :	Polyclonal, Rabbit,IgG
Dilution :	WB 1:500-2000;IHC 1:50-300
Purification :	The antibody was affinity-purified from rabbit antiserum by affinity-chromatography using epitope-specific immunogen.
Concentration :	1 mg/ml
Storage Stability :	-15°C to -25°C/1 year(Do not lower than -25°C)

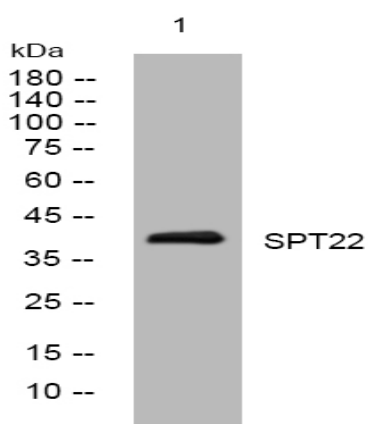
Molecularweight : 40kD

Function : tissue specificity:Highly expressed in adult testis.,

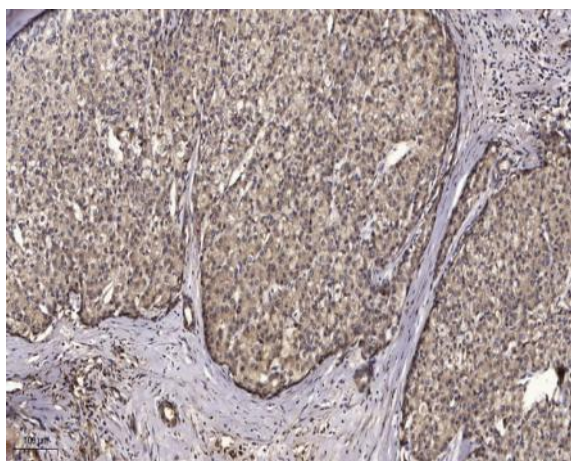
Subcellular Location : Chromosome . Localizes on meiotic chromosome axes. Accumulates on resected DNA. Localization is dependent on MEIOB. .

Expression : Highly expressed in adult testis.

Products Images



Western blot analysis of lysates from U2OS cells, primary antibody was diluted at 1:1000, 4° over night



Immunohistochemical analysis of paraffin-embedded human liver cancer. 1, Antibody was diluted at 1:200(4° overnight). 2, Tris-EDTA,pH9.0 was used for antigen retrieval. 3,Secondary antibody was diluted at 1:200(room temperature, 45min).