

## SPG16 rabbit pAb

<b>Catalog No :</b>	YT6977
<b>Reactivity :</b>	Human;Mouse
<b>Applications :</b>	WB;ELISA;IHC
<b>Target :</b>	SPG16
<b>Gene Name :</b>	SPAG16 PF20
<b>Protein Name :</b>	SPG16
<b>Human Gene Id :</b>	79582
<b>Human Swiss Prot No :</b>	Q8N0X2
<b>Mouse Gene Id :</b>	66722
<b>Mouse Swiss Prot No :</b>	Q8K450
<b>Immunogen :</b>	Synthesized peptide derived from human SPG16 AA range: 520-570
<b>Specificity :</b>	This antibody detects endogenous levels of SPG16 at Human/Mouse
<b>Formulation :</b>	Liquid in PBS containing 50% glycerol, 0.5% BSA and 0.02% sodium azide.
<b>Source :</b>	Polyclonal, Rabbit,IgG
<b>Dilution :</b>	WB 1:500-2000;IHC 1:50-300; ELISA 2000-20000
<b>Purification :</b>	The antibody was affinity-purified from rabbit antiserum by affinity-chromatography using epitope-specific immunogen.
<b>Concentration :</b>	1 mg/ml
<b>Storage Stability :</b>	-15°C to -25°C/1 year(Do not lower than -25°C)

**Molecularweight :** 69kD

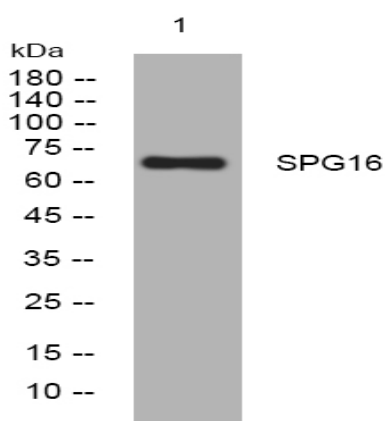
**Background :** Cilia and flagella are comprised of a microtubular backbone, the axoneme, which is organized by the basal body and surrounded by plasma membrane. SPAG16 encodes 2 major proteins that associate with the axoneme of sperm tail and the nucleus of postmeiotic germ cells, respectively (Zhang et al., 2007 [PubMed 17699735]).[supplied by OMIM, Jul 2008],

**Function :** function:Necessary for sperm flagellar function.,similarity:Contains 7 WD repeats.,subcellular location:Detected on the sperm flagellum. Detected in the central apparatus of the axoneme. Colocalizes with SPAG6 on microtubules.,subunit:Interacts with SPAG6.,tissue specificity:Isoform 1 is detected in testis. Isoform 4 is detected in testis and brain, and at lower levels in kidney, heart, pancreas, thyroid, ovary, adrenal gland, spinal cord, trachea and liver.,

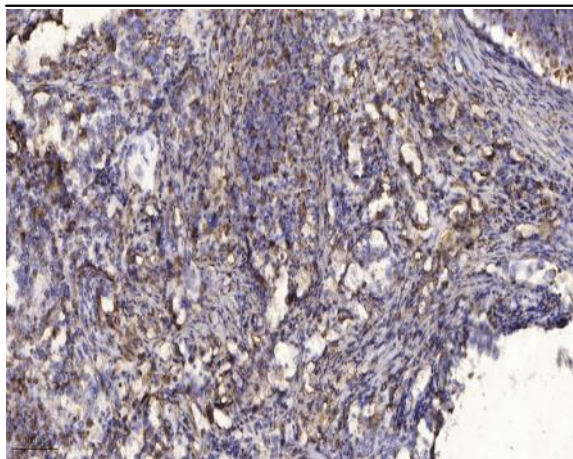
**Subcellular Location :** Cytoplasm . Cytoplasm, cytoskeleton, flagellum axoneme . Cytoplasm, cytoskeleton, cilium axoneme . Cell projection, cilium, flagellum . Detected on the sperm flagellum axoneme. Detected in the central apparatus of the axoneme. Colocalizes with SPAG6 on microtubules (By similarity) .

**Expression :** Isoform 1 is detected in testis. Isoform 4 is detected in testis and brain, and at lower levels in kidney, heart, pancreas, thyroid, ovary, adrenal gland, spinal cord, trachea and liver.

## Products Images



Western blot analysis of lysates from U2OS cells, primary antibody was diluted at 1:1000, 4° over night



Immunohistochemical analysis of paraffin-embedded human Squamous cell carcinoma of lung. 1, Antibody was diluted at 1:200(4° overnight). 2, Tris-EDTA,pH9.0 was used for antigen retrieval. 3,Secondary antibody was diluted at 1:200(room temperature, 45min).