

EFHD2 rabbit pAb

Catalog No :	YT6976
Reactivity :	Human;Mouse;Rat
Applications :	WB
Target :	EFHD2
Gene Name :	EFHD2 SWS1
Protein Name :	EFHD2
Human Gene Id :	79180
Human Swiss Prot No :	Q96C19
Mouse Swiss Prot No :	Q9D8Y0
Rat Gene Id :	298609
Rat Swiss Prot No :	Q4FZY0
Immunogen :	Synthesized peptide derived from human EFHD2 AA range: 13-63
Specificity :	This antibody detects endogenous levels of EFHD2 at Human/Mouse/Rat
Formulation :	Liquid in PBS containing 50% glycerol, 0.5% BSA and 0.02% sodium azide.
Source :	Polyclonal, Rabbit,IgG
Dilution :	WB 1[?]500-2000
Purification :	The antibody was affinity-purified from rabbit antiserum by affinity-chromatography using epitope-specific immunogen.
Concentration :	1 mg/ml

Storage Stability : -15°C to -25°C/1 year(Do not lower than -25°C)

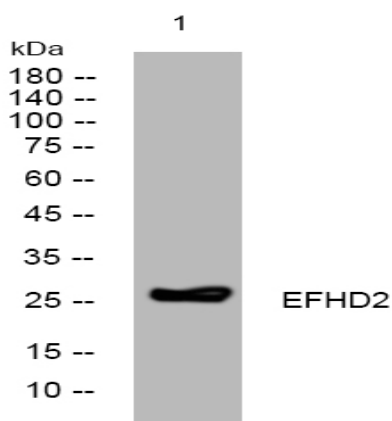
Molecularweight : 26kD

Function : similarity:Contains 2 EF-hand domains.,tissue specificity:Found in lymphocytes; preferentially expressed in CD8+ cells.,

Subcellular Location : Membrane raft . In a mouse immature B-cell line WEHI-231. .

Expression : Found in lymphocytes; preferentially expressed in CD8+ cells.

Products Images



Western blot analysis of lysates from HuvEc cells, primary antibody was diluted at 1:1000, 4° over night