

**CENPX rabbit pAb**

<b>Catalog No :</b>	YT6972
<b>Reactivity :</b>	Human;Mouse
<b>Applications :</b>	IHC;IF
<b>Target :</b>	CENPX
<b>Fields :</b>	>>Fanconi anemia pathway
<b>Gene Name :</b>	STRA13 CENPX FAAP10 MHF2
<b>Protein Name :</b>	CENPX
<b>Human Gene Id :</b>	201254
<b>Human Swiss Prot No :</b>	A8MT69
<b>Mouse Gene Id :</b>	20892
<b>Mouse Swiss Prot No :</b>	Q8C4X1
<b>Immunogen :</b>	Synthesized peptide derived from human CENPX AA range: 28-78
<b>Specificity :</b>	This antibody detects endogenous levels of CENPX at Human/Mouse
<b>Formulation :</b>	Liquid in PBS containing 50% glycerol, 0.5% BSA and 0.02% sodium azide.
<b>Source :</b>	Polyclonal, Rabbit,IgG
<b>Dilution :</b>	IHC 1:50-200. IF 1:50-200
<b>Purification :</b>	The antibody was affinity-purified from rabbit antiserum by affinity-chromatography using epitope-specific immunogen.
<b>Concentration :</b>	1 mg/ml

---

**Storage Stability :** -15°C to -25°C/1 year (Do not lower than -25°C)

---

**Molecularweight :** 9kD

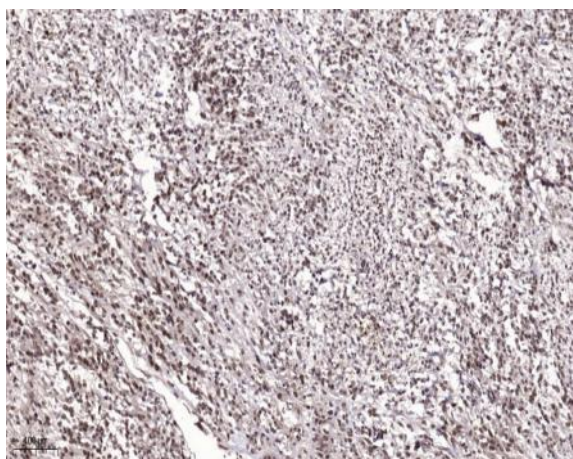
---

**Subcellular  
Location :**

Nucleus . Chromosome, centromere . Chromosome, centromere, kinetochore . Assembly of CENPS and CENPX and its partner subunits CENPT and CENPW at centromeres occurs through a dynamic exchange mechanism. Although exchange is continuous in the cell cycle, de novo assembly starts principally during mid-late S phase and is complete by G2. CENPX being less stably bound at the kinetochore than CENPS. .

---

## Products Images



Immunohistochemical analysis of paraffin-embedded human Colon cancer. 1, Antibody was diluted at 1:200(4° overnight). 2, Tris-EDTA,pH9.0 was used for antigen retrieval. 3,Secondary antibody was diluted at 1:200(room temperature, 45min).