

PHF14 rabbit pAb

Catalog No :	YT6968
Reactivity :	Human;Mouse
Applications :	WB;IHC
Target :	PHF14
Gene Name :	PHF14 KIAA0783
Protein Name :	PHF14
Human Gene Id :	9678
Human Swiss Prot No :	O94880
Mouse Gene Id :	75725
Mouse Swiss Prot No :	Q9D4H9
Immunogen :	Synthesized peptide derived from human PHF14 AA range: 379-429
Specificity :	This antibody detects endogenous levels of PHF14 at Human/Mouse
Formulation :	Liquid in PBS containing 50% glycerol, 0.5% BSA and 0.02% sodium azide.
Source :	Polyclonal, Rabbit,IgG
Dilution :	WB 1:500-2000;IHC 1:50-300
Purification :	The antibody was affinity-purified from rabbit antiserum by affinity-chromatography using epitope-specific immunogen.
Concentration :	1 mg/ml
Storage Stability :	-15°C to -25°C/1 year(Do not lower than -25°C)

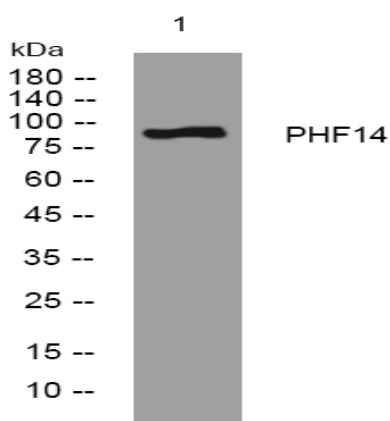
Molecularweight : 98kD**Function :**

caution:The sequence shown here is derived from an Ensembl automatic analysis pipeline and should be considered as preliminary data.,PTM:Phosphorylated upon DNA damage, probably by ATM or ATR.,similarity:Contains 2 PHD-type zinc fingers.,

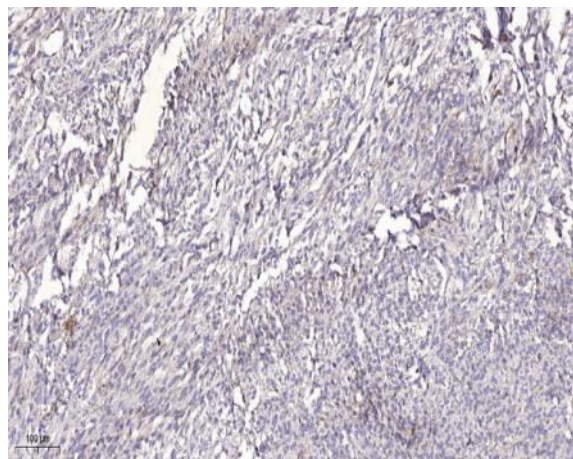
Subcellular Location :

nucleus,

Products Images



Western blot analysis of lysates from CACO2 cells, primary antibody was diluted at 1:1000, 4° over night



Immunohistochemical analysis of paraffin-embedded human Colon cancer. 1, Antibody was diluted at 1:200(4° overnight). 2, Tris-EDTA,pH9.0 was used for antigen retrieval. 3,Secondary antibody was diluted at 1:200(room temperature, 45min).