

**F115C rabbit pAb**

<b>Catalog No :</b>	YT6965
<b>Reactivity :</b>	Human;Mouse
<b>Applications :</b>	WB
<b>Target :</b>	F115C
<b>Gene Name :</b>	FAM115C FAM139A
<b>Protein Name :</b>	F115C
<b>Human Gene Id :</b>	285966
<b>Human Swiss Prot No :</b>	A6NFQ2
<b>Mouse Gene Id :</b>	232748
<b>Mouse Swiss Prot No :</b>	Q921K8
<b>Immunogen :</b>	Synthesized peptide derived from human F115C AA range: 754-804
<b>Specificity :</b>	This antibody detects endogenous levels of F115C at Human/Mouse
<b>Formulation :</b>	Liquid in PBS containing 50% glycerol, 0.5% BSA and 0.02% sodium azide.
<b>Source :</b>	Polyclonal, Rabbit,IgG
<b>Dilution :</b>	WB 1:500-2000
<b>Purification :</b>	The antibody was affinity-purified from rabbit antiserum by affinity-chromatography using epitope-specific immunogen.
<b>Concentration :</b>	1 mg/ml
<b>Storage Stability :</b>	-15°C to -25°C/1 year(Do not lower than -25°C)

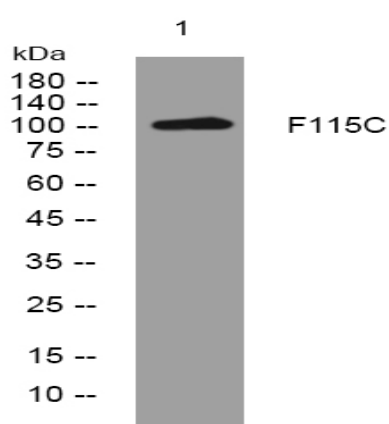
**Molecularweight :** 101kD

**Function :** similarity:Belongs to the FAM115 family.,

**Subcellular Location :** [Isoform 2]: Cell membrane . Colocalizes with TRPM8 on the plasma membrane.

**Expression :** Isoform 2 is expressed in the prostate and in cancerous prostate samples.

## Products Images



Western blot analysis of lysates from HpeG2 cells, primary antibody was diluted at 1:1000, 4° over night