

BHE22 rabbit pAb

Catalog No :	YT6964
Reactivity :	Human;Mouse
Applications :	WB
Target :	BHE22
Gene Name :	BHLHE22 BHLHB5 TNRC20
Protein Name :	BHE22
Human Gene Id :	27319
Human Swiss Prot No :	Q8NFJ8
Mouse Gene Id :	59058
Mouse Swiss Prot No :	Q8C6A8
Immunogen :	Synthesized peptide derived from human BHE22 AA range: 243-293
Specificity :	This antibody detects endogenous levels of BHE22 at Human/Mouse
Formulation :	Liquid in PBS containing 50% glycerol, 0.5% BSA and 0.02% sodium azide.
Source :	Polyclonal, Rabbit,IgG
Dilution :	WB 1[?]500-2000
Purification :	The antibody was affinity-purified from rabbit antiserum by affinity-chromatography using epitope-specific immunogen.
Concentration :	1 mg/ml
Storage Stability :	-15°C to -25°C/1 year(Do not lower than -25°C)

Molecularweight : 42kD

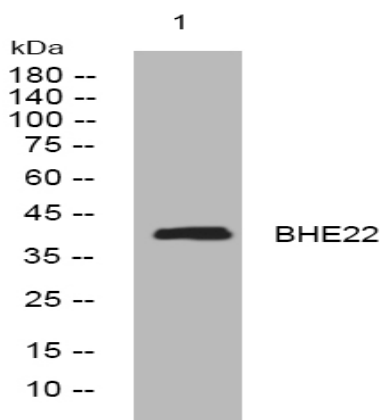
Background : This gene encodes a protein that belongs to the basic helix-loop-helix (bHLH) family of transcription factors that regulate cell fate determination, proliferation, and differentiation. A similar protein in mouse is required for the development of the dorsal cochlear nuclei, and is thought to play a role in in the differentiation of neurons involved in sensory input. The mouse protein also functions in retinogenesis. [provided by RefSeq, Oct 2016],

Function : function:Inhibits DNA binding of TCF3/E47 homodimers and TCF3 (E47)/NEUROD1 heterodimers and acts as a strong repressor of Neurod1 and Myod-responsive genes, probably by heterodimerization with class a basic helix-loop-helix factors. Despite the presence of an intact basic domain, does not bind to DNA.,similarity:Contains 1 basic helix-loop-helix (bHLH) domain.,tissue specificity:Brain-specific, with the highest expression in the cerebellum.,

Subcellular Location : Nucleus .

Expression : Brain-specific, with the highest expression in the cerebellum.

Products Images



Western blot analysis of lysates from Hela cells, primary antibody was diluted at 1:1000, 4° over night