

RAPSN rabbit pAb

Catalog No :	YT6963
Reactivity :	Human;Mouse
Applications :	WB;IHC
Target :	RAPSN
Gene Name :	RAPSN RNF205
Protein Name :	RAPSN
Human Gene Id :	5913
Human Swiss Prot No :	Q13702
Mouse Gene Id :	19400
Mouse Swiss Prot No :	P12672
Immunogen :	Synthesized peptide derived from human RAPSN AA range: 341-391
Specificity :	This antibody detects endogenous levels of RAPSN at Human/Mouse
Formulation :	Liquid in PBS containing 50% glycerol, 0.5% BSA and 0.02% sodium azide.
Source :	Polyclonal, Rabbit,IgG
Dilution :	WB 1:500-2000;IHC 1:50-300
Purification :	The antibody was affinity-purified from rabbit antiserum by affinity-chromatography using epitope-specific immunogen.
Concentration :	1 mg/ml
Storage Stability :	-15°C to -25°C/1 year(Do not lower than -25°C)

Molecularweight : 45kD**Background :**

This gene encodes a member of a family of proteins that are receptor associated proteins of the synapse. The encoded protein contains a conserved cAMP-dependent protein kinase phosphorylation site, and plays a critical role in clustering and anchoring nicotinic acetylcholine receptors at synaptic sites by linking the receptors to the underlying postsynaptic cytoskeleton, possibly by direct association with actin or spectrin. Mutations in this gene may play a role in postsynaptic congenital myasthenic syndromes. Alternatively spliced transcript variants encoding multiple isoforms have been observed for this gene. [provided by RefSeq, Apr 2011],

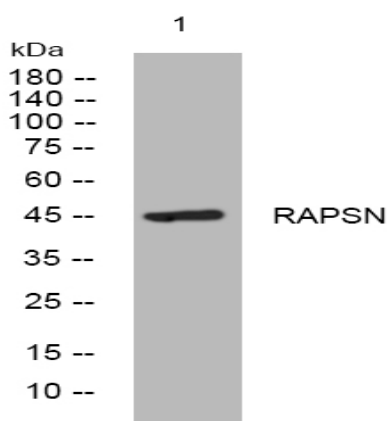
Function :

disease:Defects in RAPSN are a cause of congenital myasthenic syndrome type 1d (CMS1D) [MIM:608931]; also called congenital myasthenic syndrome associated with acetylcholine receptor deficiency. Congenital myasthenic syndromes (CMS) are inherited disorders of neuromuscular transmission that stem from mutations in presynaptic, synaptic, or postsynaptic proteins. Postsynaptic disorders result from mutations in proteins forming the subunits of the muscle acetylcholine receptor (AChR). The kinetic abnormalities of AChR result in either prolonged ion channel activations that underlie "slow-channel myasthenic syndromes" (SCCMS) or abbreviated channel activations that underlie the abnormally rapid decay of endplate currents in "fast-channel syndromes" (FCCMS). CMS1D is the third disorder associated with postsynaptic CMS which could result from mutations in the proteins forming the muscle AChR.

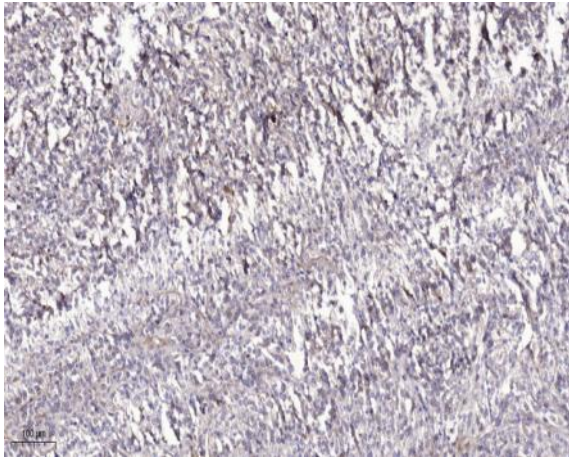
Subcellular Location :

Cell membrane; Peripheral membrane protein; Cytoplasmic side. Cell junction, synapse, postsynaptic cell membrane; Peripheral membrane protein; Cytoplasmic side. Cytoplasm, cytoskeleton. Cytoplasmic surface of postsynaptic membranes.

Products Images



Western blot analysis of lysates from U2OS cells, primary antibody was diluted at 1:1000, 4° over night



Immunohistochemical analysis of paraffin-embedded human Colon cancer. 1, Antibody was diluted at 1:200(4° overnight). 2, Tris-EDTA,pH9.0 was used for antigen retrieval. 3,Secondary antibody was diluted at 1:200(room temperature, 45min).