

NALP4 rabbit pAb

Catalog No :	YT6955
Reactivity :	Human
Applications :	WB;IHC
Target :	NALP4
Fields :	>>Pathogenic Escherichia coli infection
Gene Name :	NLRP4 NALP4 PAN2 PYPAF4 RNH2
Protein Name :	NALP4
Human Gene Id :	147945
Human Swiss Prot No :	Q96MN2
Immunogen :	Synthesized peptide derived from human NALP4 AA range: 307-357
Specificity :	This antibody detects endogenous levels of NALP4 at Human
Formulation :	Liquid in PBS containing 50% glycerol, 0.5% BSA and 0.02% sodium azide.
Source :	Polyclonal, Rabbit,IgG
Dilution :	WB 1:500-2000;IHC 1:50-300
Purification :	The antibody was affinity-purified from rabbit antiserum by affinity-chromatography using epitope-specific immunogen.
Concentration :	1 mg/ml
Storage Stability :	-15°C to -25°C/1 year(Do not lower than -25°C)
Molecularweight :	109kD

Background :

NALPs are cytoplasmic proteins that form a subfamily within the larger CATERPILLER protein family. Most short NALPs, such as NALP4, have an N-terminal pyrin (MEFV; MIM 608107) domain (PYD), followed by a NACHT domain, a NACHT-associated domain (NAD), and a C-terminal leucine-rich repeat (LRR) region. The long NALP, NALP1 (MIM 606636), also has a C-terminal extension containing a function to find domain (FIIND) and a caspase recruitment domain (CARD). NALPs are implicated in the activation of proinflammatory caspases (e.g., CASP1; MIM 147678) via their involvement in multiprotein complexes called inflammasomes (Tschopp et al., 2003 [PubMed 12563287]).[supplied by OMIM, Mar 2008],

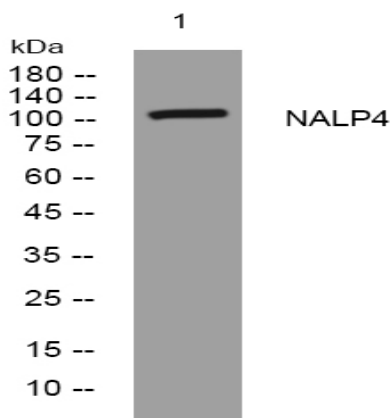
Function :

alternative products:Experimental confirmation may be lacking for some isoforms,function:May be involved in inflammation.,sequence caution:Translated as Gln.,similarity:Belongs to the NLRP family.,similarity:Contains 1 DAPIN domain.,similarity:Contains 1 NACHT domain.,similarity:Contains 8 LRR (leucine-rich) repeats.,

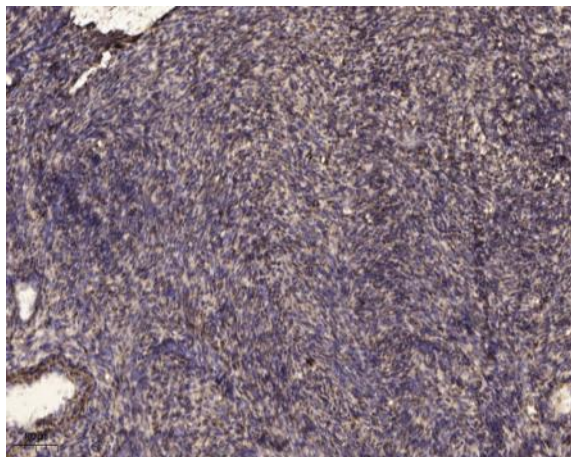
Subcellular Location :

cytosol,extracellular exosome,

Products Images



Western blot analysis of lysates from KB cells, primary antibody was diluted at 1:1000, 4° over night



Immunohistochemical analysis of paraffin-embedded human uterus. 1, Antibody was diluted at 1:200(4° overnight). 2, Tris-EDTA,pH9.0 was used for antigen retrieval. 3,Secondary antibody was diluted at 1:200(room temperature, 45min).