

## FXL12 rabbit pAb

<b>Catalog No :</b>	YT6954
<b>Reactivity :</b>	Human;Mouse
<b>Applications :</b>	WB
<b>Target :</b>	FXL12
<b>Gene Name :</b>	FBXL12 FBL12
<b>Protein Name :</b>	FXL12
<b>Human Gene Id :</b>	54850
<b>Human Swiss Prot No :</b>	Q9NXK8
<b>Mouse Gene Id :</b>	30843
<b>Mouse Swiss Prot No :</b>	Q9EPX5
<b>Immunogen :</b>	Synthesized peptide derived from human FXL12 AA range: 8-58
<b>Specificity :</b>	This antibody detects endogenous levels of FXL12 at Human/Mouse
<b>Formulation :</b>	Liquid in PBS containing 50% glycerol, 0.5% BSA and 0.02% sodium azide.
<b>Source :</b>	Polyclonal, Rabbit,IgG
<b>Dilution :</b>	WB 1[?]500-2000
<b>Purification :</b>	The antibody was affinity-purified from rabbit antiserum by affinity-chromatography using epitope-specific immunogen.
<b>Concentration :</b>	1 mg/ml
<b>Storage Stability :</b>	-15°C to -25°C/1 year(Do not lower than -25°C)

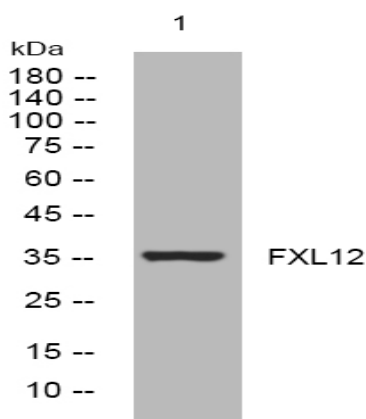
**Molecularweight :** 36kD

**Background :** Members of the F-box protein family, such as FBXL12, are characterized by an approximately 40-amino acid F-box motif. SCF complexes, formed by SKP1 (MIM 601434), cullin (see CUL1; MIM 603134), and F-box proteins, act as protein-ubiquitin ligases. F-box proteins interact with SKP1 through the F box, and they interact with ubiquitination targets through other protein interaction domains (Jin et al., 2004 [PubMed 15520277]).[supplied by OMIM, Mar 2008],

**Function :** function:Substrate-recognition component of the SCF (SKP1-CUL1-F-box protein)-type E3 ubiquitin ligase complex.,similarity:Contains 1 F-box domain.,similarity:Contains 5 LRR (leucine-rich) repeats.,subunit:Interacts with SKP1A and CUL1.,

**Subcellular Location :** ubiquitin ligase complex,cytoplasm,integral component of membrane,

## Products Images



Western blot analysis of lysates from Jurkat cells, primary antibody was diluted at 1:1000, 4° over night