

JAZF1 rabbit pAb

Catalog No :	YT6951
Reactivity :	Human;Mouse
Applications :	WB;IHC
Target :	JAZF1
Gene Name :	JAZF1 TIP27 ZNF802
Protein Name :	JAZF1
Human Gene Id :	221895
Human Swiss Prot No :	Q86VZ6
Mouse Gene Id :	231986
Mouse Swiss Prot No :	Q80ZQ5
Immunogen :	Synthesized peptide derived from human JAZF1 AA range: 57-107
Specificity :	This antibody detects endogenous levels of JAZF1 at Human/Mouse
Formulation :	Liquid in PBS containing 50% glycerol, 0.5% BSA and 0.02% sodium azide.
Source :	Polyclonal, Rabbit,IgG
Dilution :	WB 1:500-2000;IHC 1:50-300
Purification :	The antibody was affinity-purified from rabbit antiserum by affinity-chromatography using epitope-specific immunogen.
Concentration :	1 mg/ml
Storage Stability :	-15°C to -25°C/1 year(Do not lower than -25°C)

Molecularweight : 27kD

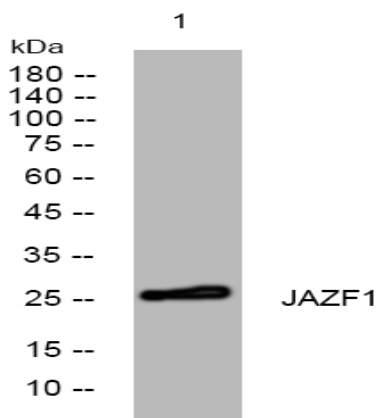
Background : This gene encodes a nuclear protein with three C2H2-type zinc fingers, and functions as a transcriptional repressor. Chromosomal aberrations involving this gene are associated with endometrial stromal tumors. Alternatively spliced variants which encode different protein isoforms have been described; however, not all variants have been fully characterized [provided by RefSeq, Jul 2008],

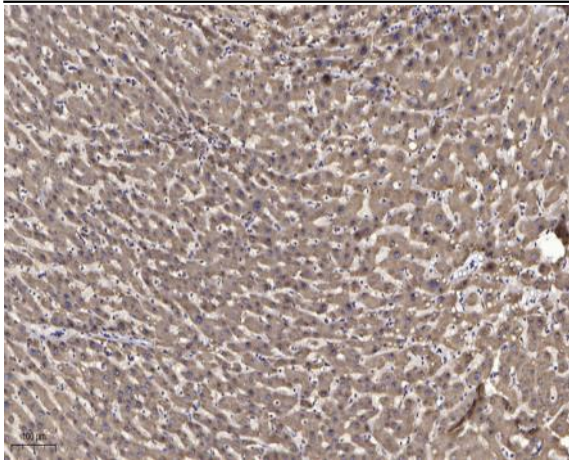
Function : disease:A chromosomal aberration involving JAZF1 may be a cause of endometrial stromal tumors. Translocation t(7;17)(p15;q21) with SUZ12. The translocation generates the JAZF1-SUZ12 oncogene consisting of the N-terminus part of JAZF1 and the C-terminus part of SUZ12. It is frequently found in all cases of endometrial stromal tumors, except in endometrial stromal sarcomas, where it is rarer.,function:Potential transcription factor.,similarity:Contains 3 C2H2-type zinc fingers.,subunit:Interacts with TAK1.,

Subcellular Location : Nucleus .

Expression : Highest expression in testis with moderate levels in colon, placenta, prostate and ovary and low levels in brain, spleen, liver and small intestine.

Products Images





Immunohistochemical analysis of paraffin-embedded human liver cancer. 1, Antibody was diluted at 1:200(4° overnight). 2, Tris-EDTA,pH9.0 was used for antigen retrieval. 3,Secondary antibody was diluted at 1:200(room temperature, 45min).