

## SYFA rabbit pAb

<b>Catalog No :</b>	YT6948
<b>Reactivity :</b>	Human;Mouse;Rat
<b>Applications :</b>	WB;ELISA;IHC
<b>Target :</b>	SYFA
<b>Fields :</b>	>>Aminoacyl-tRNA biosynthesis
<b>Gene Name :</b>	FARSA FARS FARSL FARSLA
<b>Protein Name :</b>	SYFA
<b>Human Gene Id :</b>	2193
<b>Human Swiss Prot No :</b>	Q9Y285
<b>Mouse Gene Id :</b>	66590
<b>Mouse Swiss Prot No :</b>	Q8C0C7
<b>Rat Gene Id :</b>	288917
<b>Rat Swiss Prot No :</b>	Q505J8
<b>Immunogen :</b>	Synthesized peptide derived from human SYFA AA range: 331-381
<b>Specificity :</b>	This antibody detects endogenous levels of SYFA at Human/Mouse/Rat
<b>Formulation :</b>	Liquid in PBS containing 50% glycerol, 0.5% BSA and 0.02% sodium azide.
<b>Source :</b>	Polyclonal, Rabbit,IgG
<b>Dilution :</b>	WB 1:500-2000;IHC 1:50-300; ELISA 2000-20000
<b>Purification :</b>	The antibody was affinity-purified from rabbit antiserum by affinity-

---

chromatography using epitope-specific immunogen.

---

**Concentration :** 1 mg/ml

---

**Storage Stability :** -15°C to -25°C/1 year(Do not lower than -25°C)

---

**Molecularweight :** 56kD

---

**Background :** Aminoacyl-tRNA synthetases are a class of enzymes that charge tRNAs with their cognate amino acids. This gene encodes a product which is similar to the catalytic subunit of prokaryotic and *Saccharomyces cerevisiae* phenylalanyl-tRNA synthetases (PheRS). This gene product has been shown to be expressed in a tumor-selective and cell cycle stage- and differentiation-dependent manner, the first member of the tRNA synthetase gene family shown to exhibit this type of regulated expression [provided by RefSeq, Jul 2008],

---

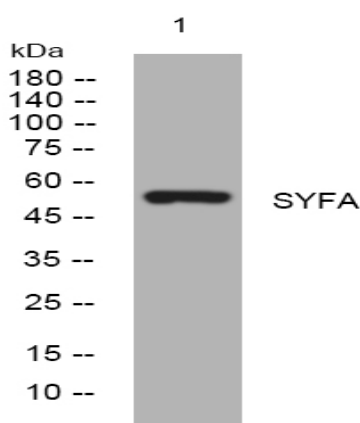
**Function :** catalytic activity:ATP + L-phenylalanine + tRNA(Phe) = AMP + diphosphate + L-phenylalanyl-tRNA(Phe).,similarity:Belongs to the class-II aminoacyl-tRNA synthetase family.,similarity:Belongs to the class-II aminoacyl-tRNA synthetase family. Phe-tRNA synthetase alpha chain type 2 subfamily.,subunit:Tetramer of two alpha and two beta chains.,

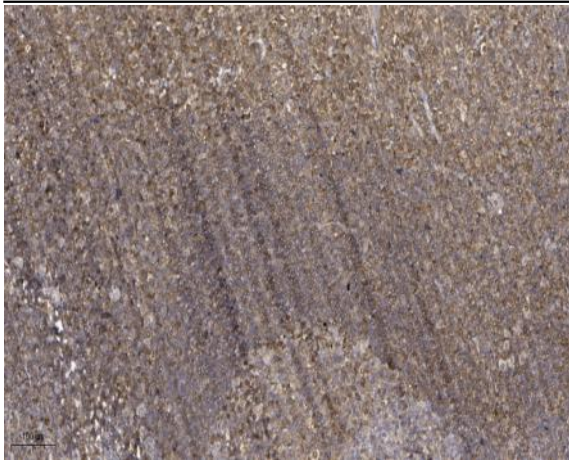
---

**Subcellular Location :** Cytoplasm .

---

## Products Images





Immunohistochemical analysis of paraffin-embedded human tonsil. 1, Antibody was diluted at 1:200(4 ° overnight). 2, Tris-EDTA,pH9.0 was used for antigen retrieval. 3,Secondary antibody was diluted at 1:200(room temperature, 45min).