

SC22C rabbit pAb

Catalog No :	YT6946
Reactivity :	Human;Mouse
Applications :	WB;IF;ELISA;IHC
Target :	SC22C
Gene Name :	SEC22C SEC22L3 UNQ459/PRO784
Protein Name :	SC22C
Human Gene Id :	9117
Human Swiss Prot No :	Q9BRL7
Mouse Gene Id :	215474
Mouse Swiss Prot No :	Q8BXT9
Immunogen :	Synthesized peptide derived from human SC22C AA range: 130-180
Specificity :	This antibody detects endogenous levels of SC22C at Human/Mouse
Formulation :	Liquid in PBS containing 50% glycerol, 0.5% BSA and 0.02% sodium azide.
Source :	Polyclonal, Rabbit,IgG
Dilution :	WB 1:500-2000; IF ICC 1:50-200;ELISA 1:2000-20000;IHC 1:50-200
Purification :	The antibody was affinity-purified from rabbit antiserum by affinity-chromatography using epitope-specific immunogen.
Concentration :	1 mg/ml
Storage Stability :	-15°C to -25°C/1 year(Do not lower than -25°C)

Molecularweight : 33kD

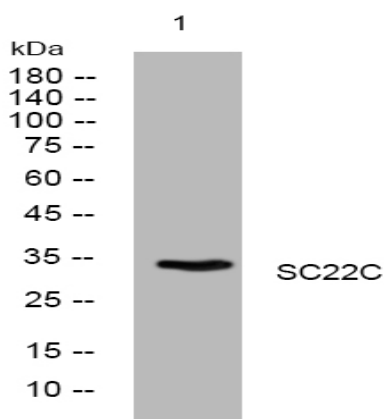
Background : This gene encodes a member of the SEC22 family of vesicle trafficking proteins. The encoded protein is localized to the endoplasmic reticulum and may play a role in the early stages of ER-Golgi protein trafficking. Alternatively spliced transcript variants encoding multiple isoforms have been observed for this gene. [provided by RefSeq, Jan 2011],

Function : function:May be involved in vesicle transport between the ER and the Golgi complex.,similarity:Belongs to the synaptobrevin family.,similarity:Contains 1 longin domain.,tissue specificity:Ubiquitously expressed.,

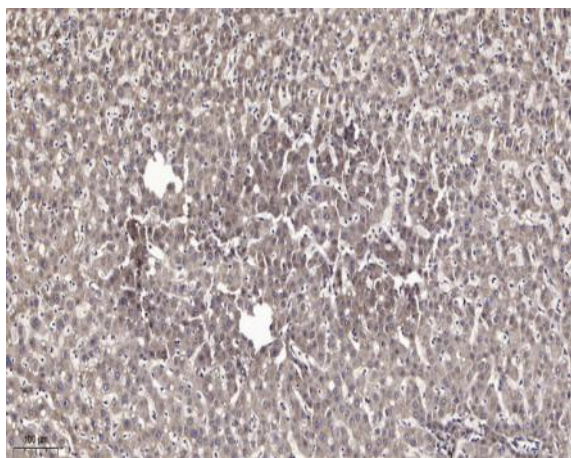
Subcellular Location : Endoplasmic reticulum membrane ; Multi-pass membrane protein .

Expression : Ubiquitously expressed.

Products Images



Western blot analysis of lysates from MDA-MB cells, primary antibody was diluted at 1:1000, 4° over night



Immunohistochemical analysis of paraffin-embedded human liver cancer. 1, Antibody was diluted at 1:200(4° overnight). 2, Tris-EDTA,pH9.0 was used for antigen retrieval. 3,Secondary antibody was diluted at 1:200(room temperature, 45min).