

PCLI1 rabbit pAb

Catalog No :	YT6939
Reactivity :	Human;Mouse
Applications :	WB;ELISA;IHC
Target :	PCLI1
Gene Name :	PID1 NYGGF4 PCLI1 HMFN2073
Protein Name :	PCLI1
Human Gene Id :	55022
Human Swiss Prot No :	Q7Z2X4
Mouse Gene Id :	98496
Mouse Swiss Prot No :	Q3UBG2
Immunogen :	Synthesized peptide derived from human PCLI1 AA range: 144-194
Specificity :	This antibody detects endogenous levels of PCLI1 at Human/Mouse
Formulation :	Liquid in PBS containing 50% glycerol, 0.5% BSA and 0.02% sodium azide.
Source :	Polyclonal, Rabbit,IgG
Dilution :	WB 1:500-2000;IHC 1:50-300; ELISA 2000-20000
Purification :	The antibody was affinity-purified from rabbit antiserum by affinity-chromatography using epitope-specific immunogen.
Concentration :	1 mg/ml
Storage Stability :	-15°C to -25°C/1 year(Do not lower than -25°C)

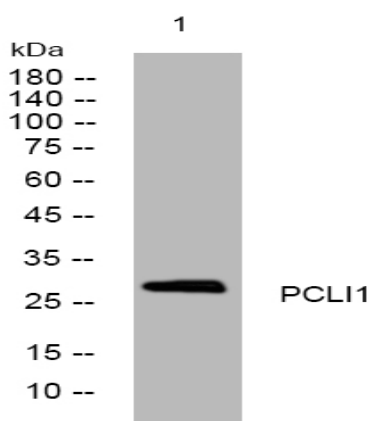
Molecularweight : 28kD

Function : function:Increases proliferation of preadipocytes without affecting adipocytic differentiation.,induction:Up-regulated in fat of obese subjects.,polymorphism:Some sequences seem to have a duplication of exon 2.,similarity:Contains 1 PID domain.,subunit:Found in a complex with PID1/PCL11, LRP1 and CUBNI. Interacts with LRP1 and CUBN.,tissue specificity:Expressed in subcutaneous fat, heart, skeletal muscle, brain, colon, thymus, spleen, kidney, liver, small intestine, placenta, lung and peripheral blood leukocyte.,

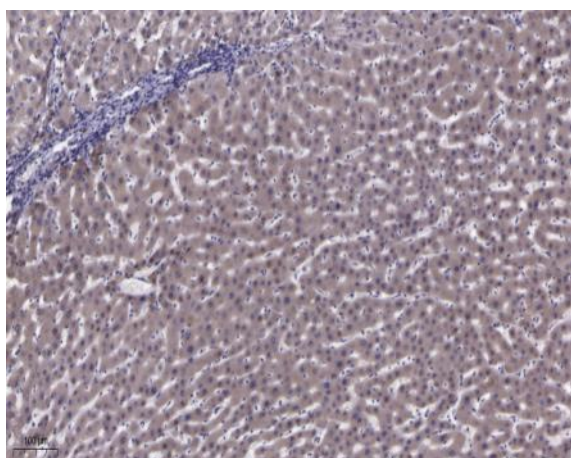
Subcellular Location : Cytoplasm .

Expression : Expressed in subcutaneous fat, heart, skeletal muscle, brain, colon, thymus, spleen, kidney, liver, small intestine, placenta, lung and peripheral blood leukocyte.

Products Images



Western blot analysis of lysates from Hela cells, primary antibody was diluted at 1:1000, 4° over night



Immunohistochemical analysis of paraffin-embedded human liver cancer. 1, Antibody was diluted at 1:200(4° overnight). 2, Tris-EDTA,pH9.0 was used for antigen retrieval. 3,Secondary antibody was diluted at 1:200(room temperature, 45min).