

RU2A rabbit pAb

Catalog No :	YT6937
Reactivity :	Human;Mouse
Applications :	WB
Target :	RU2A
Fields :	>>Spliceosome
Gene Name :	SNRPA1
Protein Name :	RU2A
Human Gene Id :	6627
Human Swiss Prot No :	P09661
Mouse Gene Id :	68981
Mouse Swiss Prot No :	P57784
Immunogen :	Synthesized peptide derived from human RU2A AA range: 47-97
Specificity :	This antibody detects endogenous levels of RU2A at Human/Mouse
Formulation :	Liquid in PBS containing 50% glycerol, 0.5% BSA and 0.02% sodium azide.
Source :	Polyclonal, Rabbit,IgG
Dilution :	WB 1[?]500-2000
Purification :	The antibody was affinity-purified from rabbit antiserum by affinity-chromatography using epitope-specific immunogen.
Concentration :	1 mg/ml

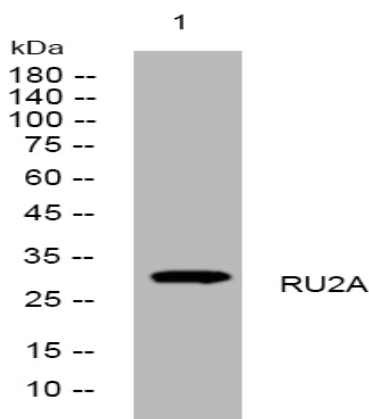
Storage Stability : -15°C to -25°C/1 year(Do not lower than -25°C)

Molecularweight : 28kD

Function : function:This protein is associated with sn-RNP U2. It helps the A' protein to bind stem loop IV of U2 snRNA.,similarity:Belongs to the U2 small nuclear ribonucleoprotein A family.,similarity:Contains 3 LRR (leucine-rich) repeats.,subunit:Identified in the spliceosome C complex, at least composed of AQR, ASCC3L1, C19orf29, CDC40, CDC5L, CRNKL1, DDX23, DDX41, DDX48, DDX5, DGCR14, DHX35, DHX38, DHX8, EFTUD2, FRG1, GPATC1, HNRPA1, HNRPA2B1, HNRPA3, HNRPC, HNRPF, HNRPH1, HNRPK, HNRPM, HNRPR, HNRPU, KIAA1160, KIAA1604, LSM2, LSM3, MAGOH, MORG1, PABPC1, PLRG1, PNN, PPIE, PPIL1, PPIL3, PPWD1, PRPF19, PRPF4B, PRPF6, PRPF8, RALY, RBM22, RBM8A, RBMX, SART1, SF3A1, SF3A2, SF3A3, SF3B1, SF3B2, SF3B3, SFRS1, SKIV2L2, SNRPA1, SNRPB, SNRPB2, SNRPD1, SNRPD2, SNRPD3, SNRPE, SNRPF, SNRPG, SNW1, SRRM1, SRRM2, SYF2, SYNCRIP, TFIP11, THOC4, U2AF1, WDR57, XAB2 and ZCCHC8. Found in a pre-mRNA splicing complex

Subcellular Location : Nucleus .

Products Images



Western blot analysis of lysates from CACO2 cells, primary antibody was diluted at 1:1000, 4° over night