

## ADAD1 rabbit pAb

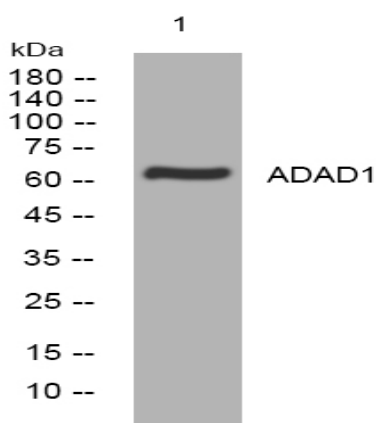
<b>Catalog No :</b>	YT6934
<b>Reactivity :</b>	Human;Mouse;Rat
<b>Applications :</b>	WB
<b>Target :</b>	ADAD1
<b>Gene Name :</b>	ADAD1 TENR
<b>Protein Name :</b>	ADAD1
<b>Human Gene Id :</b>	132612
<b>Human Swiss Prot No :</b>	Q96M93
<b>Mouse Gene Id :</b>	21744
<b>Mouse Swiss Prot No :</b>	Q5SUE7
<b>Rat Gene Id :</b>	294979
<b>Rat Swiss Prot No :</b>	Q3KR54
<b>Immunogen :</b>	Synthesized peptide derived from human ADAD1 AA range: 335-385
<b>Specificity :</b>	This antibody detects endogenous levels of ADAD1 at Human/Mouse/Rat
<b>Formulation :</b>	Liquid in PBS containing 50% glycerol, 0.5% BSA and 0.02% sodium azide.
<b>Source :</b>	Polyclonal, Rabbit,IgG
<b>Dilution :</b>	WB 1:500-2000
<b>Purification :</b>	The antibody was affinity-purified from rabbit antiserum by affinity-chromatography using epitope-specific immunogen.

---

<b>Concentration :</b>	<u>1 mg/ml</u>
<b>Storage Stability :</b>	<u>-15°C to -25°C/1 year(Do not lower than -25°C)</u>
<b>Molecularweight :</b>	<u>63kD</u>
<b>Function :</b>	<u>function:Plays a role in spermatogenesis. Binds to RNA but not to DNA.,similarity:Belongs to the ADAD family.,similarity:Contains 1 A to I editase domain.,similarity:Contains 1 DRBM (double-stranded RNA-binding) domain.,</u>
<b>Subcellular Location :</b>	<u>Nucleus .</u>

---

## Products Images



Western blot analysis of lysates from HeLa cells, primary antibody was diluted at 1:1000, 4° over night