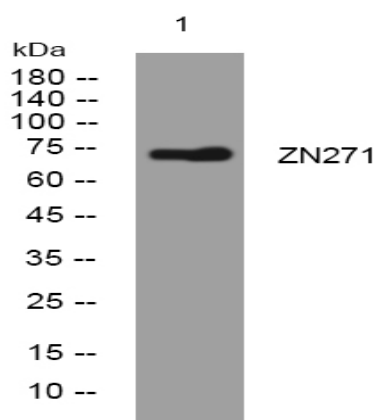


ZN271 rabbit pAb

Catalog No :	YT6932
Reactivity :	Human;Mouse
Applications :	WB
Target :	ZN271
Gene Name :	ZNF271 ZNFEB
Protein Name :	ZN271
Human Swiss Prot No :	Q14591
Mouse Gene Id :	22694
Mouse Swiss Prot No :	P15620
Immunogen :	Synthesized peptide derived from human ZN271 AA range: 244-294
Specificity :	This antibody detects endogenous levels of ZN271 at Human/Mouse
Formulation :	Liquid in PBS containing 50% glycerol, 0.5% BSA and 0.02% sodium azide.
Source :	Polyclonal, Rabbit,IgG
Dilution :	WB 1:500-2000
Purification :	The antibody was affinity-purified from rabbit antiserum by affinity-chromatography using epitope-specific immunogen.
Concentration :	1 mg/ml
Storage Stability :	-15°C to -25°C/1 year(Do not lower than -25°C)
Molecularweight :	72kD

Products Images



Western blot analysis of lysates from KB cells, primary antibody was diluted at 1:1000, 4 ° over night