

S35A5 rabbit pAb

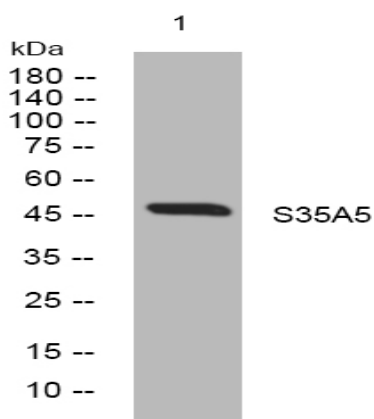
Catalog No :	YT6930
Reactivity :	Human;Mouse
Applications :	WB
Target :	S35A5
Gene Name :	SLC35A5 UNQ164/PRO190
Protein Name :	S35A5
Human Gene Id :	55032
Human Swiss Prot No :	Q9BS91
Mouse Gene Id :	74102
Mouse Swiss Prot No :	Q921R7
Immunogen :	Synthesized peptide derived from human S35A5 AA range: 107-157
Specificity :	This antibody detects endogenous levels of S35A5 at Human/Mouse
Formulation :	Liquid in PBS containing 50% glycerol, 0.5% BSA and 0.02% sodium azide.
Source :	Polyclonal, Rabbit,IgG
Dilution :	WB 1:500-2000
Purification :	The antibody was affinity-purified from rabbit antiserum by affinity-chromatography using epitope-specific immunogen.
Concentration :	1 mg/ml
Storage Stability :	-15°C to -25°C/1 year(Do not lower than -25°C)

Molecularweight : 47kD

Function : similarity:Belongs to the nucleotide-sugar transporter family. SLC35A subfamily.,

Subcellular Location : Membrane ; Multi-pass membrane protein .

Products Images



Western blot analysis of lysates from U2OS cells, primary antibody was diluted at 1:1000, 4° over night