

GDF11 rabbit pAb

Catalog No :	YT6928
Reactivity :	Human;Mouse;Rat
Applications :	WB
Target :	GDF11
Fields :	>>Cytokine-cytokine receptor interaction
Gene Name :	GDF11 BMP11
Protein Name :	GDF11
Human Gene Id :	10220
Human Swiss Prot No :	O95390
Mouse Gene Id :	14561
Mouse Swiss Prot No :	Q9Z1W4
Rat Swiss Prot No :	Q9Z217
Immunogen :	Synthesized peptide derived from human GDF11 AA range: 217-267
Specificity :	This antibody detects endogenous levels of GDF11 at Human/Mouse/Rat
Formulation :	Liquid in PBS containing 50% glycerol, 0.5% BSA and 0.02% sodium azide.
Source :	Polyclonal, Rabbit,IgG
Dilution :	WB 1:500-2000
Purification :	The antibody was affinity-purified from rabbit antiserum by affinity-chromatography using epitope-specific immunogen.

Concentration : 1 mg/ml

Storage Stability : -15°C to -25°C/1 year(Do not lower than -25°C)

Molecularweight : 45kD

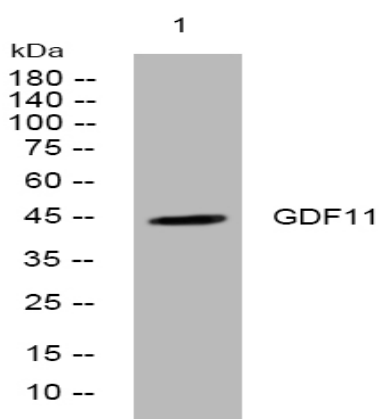
Background : This gene encodes a secreted ligand of the TGF-beta (transforming growth factor-beta) superfamily of proteins. Ligands of this family bind various TGF-beta receptors leading to recruitment and activation of SMAD family transcription factors that regulate gene expression. The encoded preproprotein is proteolytically processed to generate each subunit of the disulfide-linked homodimer. This protein plays a role in the development of the nervous and other organ systems, and may regulate aging. [provided by RefSeq, Aug 2016],

Function : function:Secreted signal that acts globally to specify positional identity along the anterior/posterior axis during development. Play critical roles in patterning both mesodermal and neural tissues and in establishing the skeletal pattern.,similarity:Belongs to the TGF-beta family.,subunit:Homodimer; disulfide-linked.,

Subcellular Location : Secreted .

Expression : In the embryo, strong expression is seen in the palatal epithelia, including the medial edge epithelial and midline epithelial seam of the palatal shelves. Less pronounced expression is also seen throughout the palatal shelf and tongue mesenchyme.

Products Images



Western blot analysis of lysates from A549 cells, primary antibody was diluted at 1:1000, 4° over night