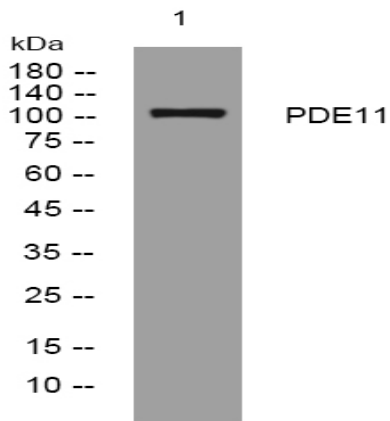


PDE11 rabbit pAb

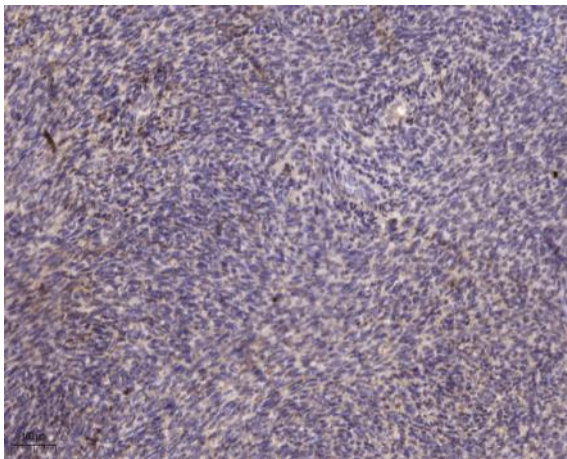
Catalog No :	YT6919
Reactivity :	Human;Mouse;Rat
Applications :	WB;ELISA;IHC
Target :	PDE11
Fields :	>>Purine metabolism;>>Metabolic pathways;>>Cushing syndrome;>>Morphine addiction
Gene Name :	PDE11A
Protein Name :	PDE11
Human Gene Id :	50940
Human Swiss Prot No :	Q9HCR9
Mouse Gene Id :	241489
Mouse Swiss Prot No :	P0C1Q2
Rat Gene Id :	140928
Rat Swiss Prot No :	Q8VID6
Immunogen :	Synthesized peptide derived from human PDE11 AA range: 421-471
Specificity :	This antibody detects endogenous levels of PDE11 at Human/Mouse/Rat
Formulation :	Liquid in PBS containing 50% glycerol, 0.5% BSA and 0.02% sodium azide.
Source :	Polyclonal, Rabbit,IgG
Dilution :	WB 1:500-2000;IHC 1:50-300; ELISA 2000-20000

Purification :	The antibody was affinity-purified from rabbit antiserum by affinity-chromatography using epitope-specific immunogen.
Concentration :	1 mg/ml
Storage Stability :	-15°C to -25°C/1 year(Do not lower than -25°C)
Molecularweight :	103kD
Background :	<p>The 3'&5'-cyclic nucleotides cAMP and cGMP function as second messengers in a wide variety of signal transduction pathways. 3'&5'-cyclic nucleotide phosphodiesterases (PDEs) catalyze the hydrolysis of cAMP and cGMP to the corresponding 5'-monophosphates and provide a mechanism to downregulate cAMP and cGMP signaling. This gene encodes a member of the PDE protein superfamily. Mutations in this gene are a cause of Cushing disease and adrenocortical hyperplasia. Multiple transcript variants encoding different isoforms have been found for this gene. [provided by RefSeq, Jul 2008],</p>
Function :	<p>catalytic activity:Adenosine 3',5'-cyclic phosphate + H(2)O = adenosine 5'-phosphate.,catalytic activity:Guanosine 3',5'-cyclic phosphate + H(2)O = guanosine 5'-phosphate.,cofactor:Divalent cations.,disease:Defects in PDE11A are the cause of primary pigmented nodular adrenocortical disease type 2 (PPNAD2) [MIM:610475]. Primary pigmented nodular adrenocortical disease is a rare bilateral adrenal defect causing ACTH-independent Cushing syndrome. PPNAD2 is characterized by adrenal glands with overall normal size and weight, and multiple small yellow-to-dark brown nodules surrounded by a cortex with a uniform appearance. Microscopically, there are moderate diffuse cortical hyperplasia with mostly nonpigmented nodules, multiple capsular deficits and massive circumscribed and infiltrating extra-adrenal cortical excrescences with micronodules. PPNAD2 leads to Cushing syndrome.,domain:The tandem</p>
Subcellular Location :	Cytoplasm, cytosol .
Expression :	Isoform 1 is present in prostate, pituitary, heart and liver. It is however not present in testis nor in penis, suggesting that weak inhibition by Tadalafil (Cialis) is not relevant (at protein level). Isoform 2 may be expressed in testis. Isoform 4 is expressed in adrenal cortex.

Products Images



Western blot analysis of lysates from HCT116 cells, primary antibody was diluted at 1:1000, 4° over night



Immunohistochemical analysis of paraffin-embedded human uterus. 1, Antibody was diluted at 1:200(4° overnight). 2, Tris-EDTA,pH9.0 was used for antigen retrieval. 3,Secondary antibody was diluted at 1:200(room temperature, 45min).