

RPH3L rabbit pAb

Catalog No :	YT6911
Reactivity :	Human;Mouse;Rat
Applications :	WB
Target :	RPH3L
Gene Name :	RPH3AL NOC2
Protein Name :	RPH3L
Human Gene Id :	9501
Human Swiss Prot No :	Q9UNE2
Mouse Gene Id :	380714
Mouse Swiss Prot No :	Q768S4
Rat Gene Id :	171123
Rat Swiss Prot No :	O54880
Immunogen :	Synthesized peptide derived from human RPH3L AA range: 162-212
Specificity :	This antibody detects endogenous levels of RPH3L at Human/Mouse/Rat
Formulation :	Liquid in PBS containing 50% glycerol, 0.5% BSA and 0.02% sodium azide.
Source :	Polyclonal, Rabbit,IgG
Dilution :	WB 1:500-2000
Purification :	The antibody was affinity-purified from rabbit antiserum by affinity-chromatography using epitope-specific immunogen.

Concentration : 1 mg/ml

Storage Stability : -15°C to -25°C/1 year(Do not lower than -25°C)

Molecularweight : 35kD

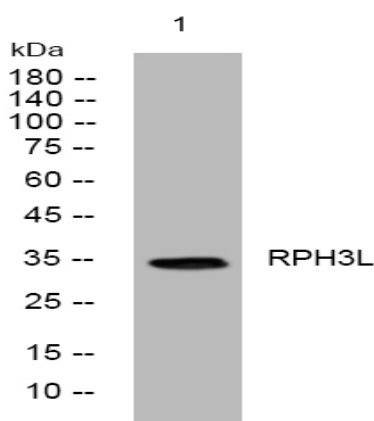
Background : The protein encoded by this gene plays a direct regulatory role in calcium-ion-dependent exocytosis in both endocrine and exocrine cells and plays a key role in insulin secretion by pancreatic cells. This gene is likely a tumor suppressor. Alternative splicing results in multiple transcript variants encoding distinct isoforms. [provided by RefSeq, Jun 2010],

Function : domain:The N-terminus of the RabBD domain is necessary and sufficient for interaction with RAB27A.,function:Rab GTPase effector involved in the late steps of regulated exocytosis, both in endocrine and exocrine cells (By similarity). Acts as a potential RAB3B effector protein in epithelial cells.,similarity:Contains 1 FYVE-type zinc finger.,similarity:Contains 1 RabBD (Rab-binding) domain.,subcellular location:Recruited to the vesicle membrane in a GTP- and RAB3B-dependent manner in epithelial cells.,subunit:Recruited to dense-core vesicles through specific interaction with RAB27A in endocrine cells. Interacts with RAB3A, RAB3B, RAB3C and RAB3D. Interacts with ZYX.,tissue specificity:Moderate to high levels of expression in thyroid, ovary, stomach, heart, pancreas, skeletal muscle, kidney and liver. Also detected in epithelial cells.,

Subcellular Location : Cytoplasm . Cytoplasmic vesicle, secretory vesicle membrane . Recruited to the vesicle membrane in a GTP- and RAB3B-dependent manner in epithelial cells.

Expression : Moderate to high levels of expression in thyroid, ovary, stomach, heart, pancreas, skeletal muscle, kidney and liver. Also detected in epithelial cells.

Products Images



Western blot analysis of lysates from SW480 cells, primary antibody was diluted at 1:1000, 4° over night