

STX10 rabbit pAb

Catalog No :	YT6910
Reactivity :	Human
Applications :	WB;IHC
Target :	STX10
Fields :	>>Salmonella infection
Gene Name :	STX10 SYN10
Protein Name :	STX10
Human Gene Id :	8677
Human Swiss Prot No :	O60499
Immunogen :	Synthesized peptide derived from human STX10 AA range: 95-145
Specificity :	This antibody detects endogenous levels of STX10 at Human
Formulation :	Liquid in PBS containing 50% glycerol, 0.5% BSA and 0.02% sodium azide.
Source :	Polyclonal, Rabbit,IgG
Dilution :	WB 1:500-2000;IHC 1:50-300
Purification :	The antibody was affinity-purified from rabbit antiserum by affinity-chromatography using epitope-specific immunogen.
Concentration :	1 mg/ml
Storage Stability :	-15°C to -25°C/1 year(Do not lower than -25°C)
Molecularweight :	27kD

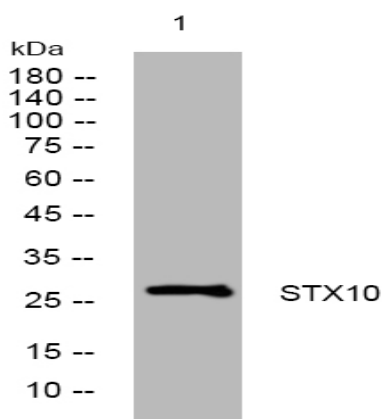
Background : This gene belongs to the syntaxin family and encodes a soluble N-ethylmaleimide sensitive factor attachment protein receptor (SNARE). The encoded protein is involved in docking and fusion events at the Golgi apparatus. Alternative splicing results in multiple transcript variants. [provided by RefSeq, Oct 2012],

Function : function:SNARE that may function to receive vesicles either from the Golgi stack or from the endosome.,similarity:Belongs to the syntaxin family.,similarity:Contains 1 t-SNARE coiled-coil homology domain.,subunit:Interacts with VPS52.,tissue specificity:Expressed at high levels in heart, skeletal muscle and pancreas.,

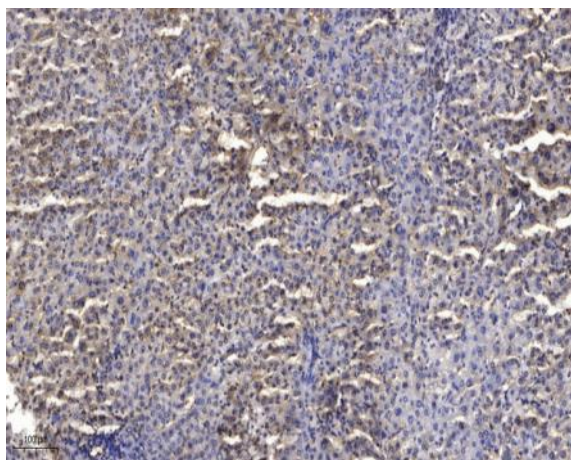
Subcellular Location : Golgi apparatus membrane ; Single-pass type IV membrane protein .

Expression : Expressed at high levels in heart, skeletal muscle and pancreas.

Products Images



Western blot analysis of lysates from HpeG2 cells, primary antibody was diluted at 1:1000, 4° over night



Immunohistochemical analysis of paraffin-embedded human liver cancer. 1, Antibody was diluted at 1:200(4° overnight). 2, Tris-EDTA,pH9.0 was used for antigen retrieval. 3,Secondary antibody was diluted at 1:200(room temperature, 45min).